

S. No.	Name of Work	Map Number
<b>1</b>	<b>220/132/33kV substation Ajaygarh (District-Panna)</b>	
i	Construction of 220/132/33kV substation Ajaygarh	
ii	LILO of both circuits of Satna-Chhatarpur 220kV line at Ajaygarh 220kV S/s	1
iii	Ajaygarh -Panna 132kV DCDS line	1
iv	Ajaygarh -Luvkushnagar (Laundi) 132kV DCSS line	2
<b>2</b>	<b>220/132/33kV substation Begamganj (District - Raisen)</b>	
i	Construction of 220/132/33kV substation at Begamganj	
ii	Sagar - Begamganj 220kV DCDS line	
iii	Begamganj -Rahatgarh 132kV DCSS line	3
iv	Begamganj -Silwani 132kV DCSS line	4
v	Begamganj -Gyaraspur 132kV DCSS line	5
vi	Begamganj -Gairatganj 132kV DCDS line	6
		7
<b>3</b>	<b>220/132kV Substation at Bargawan (District-Singrauli)</b>	
i	Construction of 220/132/33kV substation at Bargawan	
ii	LILO of both circuits of Sidhi - , Hindalco . 220kV line at Bargawan 220kV S/s	8
iii	LILO of both circuits of Rajmilan - Morwa/ Waidhan 132kV line at Bargawan 220kV S/s	8
<b>4</b>	<b>132/33kV substation at MehaluwaChauraha (District-Vidisha)</b>	
i	Construction of 132/33kV substation at MehaluwaChauraha	
ii	LILO of Bina-Ganjbasoda 132kV line at MehaluwaChauraha	9
<b>5</b>	<b>132/33kV substation at Narwar (District-Shivpuri)</b>	
i	Construction of 132/33kV substation at Narwar	
ii	LILO of one circuit of Madhikheda-Karera 132kV DCDS line at Narwar	
		10
<b>6</b>	<b>132/33kV substation at Kanather (District - Bhind)</b>	
i	Construction of 132/33kV substation at Kanather	
ii	LILO of Mehgaon 220-Seondha 132kV S/C line at Kanather	11

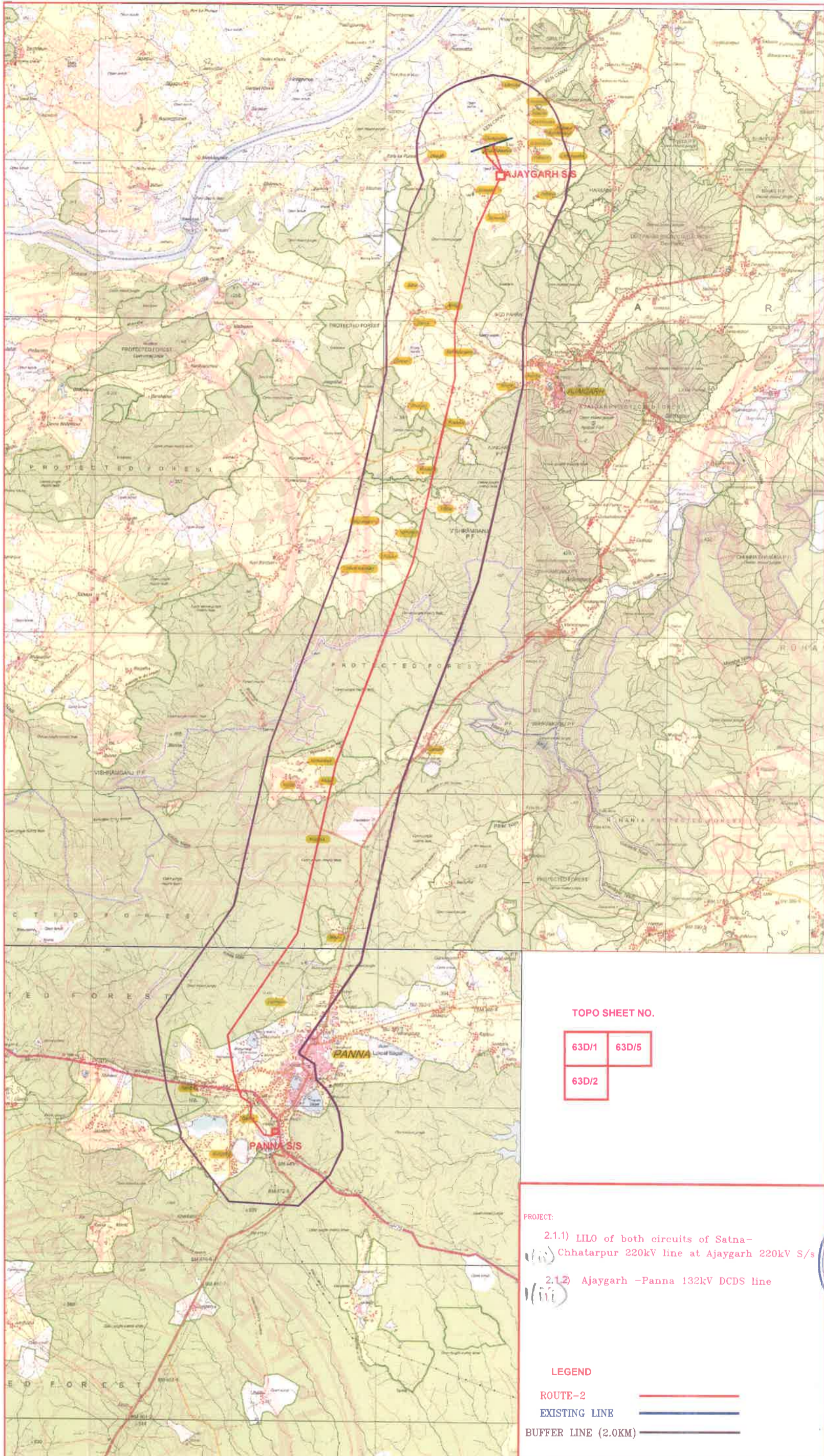
*[Signature]*  
13/06/2022

iii	Hastinapur-Kanather 132kV DCSS line	12
<b>7</b>	<b>132/33kV substation at Beerpur (District-Sheopur)</b>	
i	Construction of 132/33kV substation at Beerpur	
ii	LILO of one circuit of Sabalgarh-Sheopur 132kV DCDS line at Beerpur	13
<b>8</b>	<b>132/33kV substation at MES Gwalior (District-Gwalior)</b>	
i	Construction of 132/33kV substation at MES Gwalior	
ii	Malanpur 220-MES Gwalior 132kV DCDS line	14
<b>9</b>	<b>132/33kV substation at Khaniyadana (District-Shivpuri)</b>	
i	Construction of 132/33kV substation at Khaniyadana	
ii	LILO of Pichhore - Raj ghat 132kV line at Khaniyadana	15
<b>10</b>	<b>132/33kV substation at Chand (District-Chhindwara)</b>	
i	Construction of 132/33kV substation at Chand	
ii	Chhindwara 220-Chand-Bichhua 132kV DCSS line	16 (Chhindwara - Chand), 17 (Chand - Bichhua)
<b>11</b>	<b>132/33kV substation at Keolari (District-Seoni)</b>	
i	Construction of 132/33kV substation at Keolari	
ii	LILO of one circuit of Seoni 220-Nainpur 132kV DCDS (new line) at Keolari	
<b>12</b>	<b>132/33kV substation at Devendranagar (District-Panna)</b>	18
i	Construction of 132/33kV substation at Devendranagar	
ii	LILO of remaining part of Satna-Panna 132kV S/c line from Nagod to Panna at Devendranagar.	19
<b>13</b>	<b>132/33kV substation at Semariya (District-Panna)</b>	
i	Construction of 132/33kV substation at Semariya	
ii	Patera-Semariya-Hatta 132kV DCSS line	20 (Patera - Semariya), 21 (Semariya - Hatta)

*Signature*  
13/06/2022

<b>14</b>	<b>132/33kV substation at Khaira (Manikwar) (District-Rewa)</b>	
i	Construction of 132/33kV substation at Khaira (Manikwar)	
ii	Mauganj- Khaira (Manikwar) -Mangawan 132kV DCSS line	22 (Mauganj - Khaira), 23 (Khaira - Mangawan)
<b>15</b>	<b>132/33kV substation at Bahoribandh (District-Katni)</b>	
i	Construction of 132/33kV substation at Bahoribandh	
ii	Sleemnabad-Bahoribandh-Katangī 132kV DCSS line	24
<b>16</b>	<b>220/33kV substation at Manpur (Bijouri) (District-Umariya)</b>	
i	Construction of 220/33kV substation at Manpur (Bijouri)	
ii	LILO of Birsinghpur-Satna 220kV line at Manpur (Bijouri)	25
<b>17</b>	<b>132/33kV substation at Gopalganj (Kurai) (District-Seoni)</b>	
i	Construction of 132/33kV substation at Gopalganj (Kurai)	
ii	LILO of one circuit of PENCH-Seoni 132kV DCDS line at Gopalganj (Kurai).	26
<b>18</b>	<b>132/33kV substation Harrai (District-Chhindwara)</b>	
i	Construction of 132/33kV substation at Harrai	
ii	Deonagar - Harrai - Amarwara 132kV DCSS line	27
<b>19</b>	<b>System Strengthening Works</b>	
i	Digoda - Prithivipur 132kV DCSS line	28
ii	LILO of Nainpur - Mandia 132kV line at Baihar 132kV S/s	29

*Ally*  
13/08/2022



TOPO SHEET NO.

63D/1	63D/5
63D/2	

PROJECT:

- 2.1.1) LIL0 of both circuits of Satna-Chhatarpur 220kV line at Ajaygarh 220kV S/s (iv)
- 2.1.2) Ajaygarh -Panna 132kV DCDS line (iii)

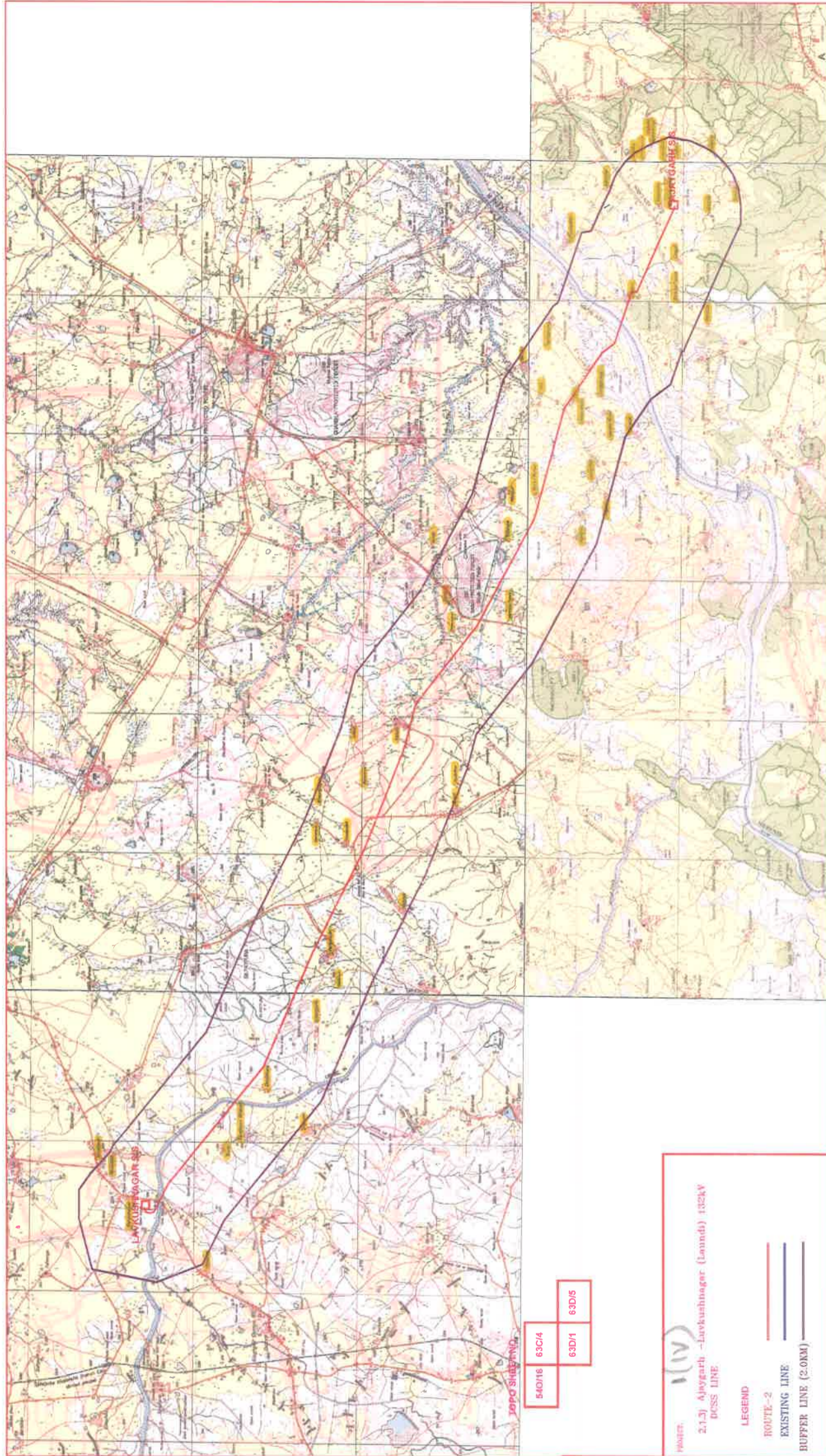
LEGEND

- ROUTE-2
- EXISTING LINE
- BUFFER LINE (2.0KM)

MAP.No.1  
 P.No.59/2021  
 TL/3 At.17.05.2021  
 S.No. 1(ii), 1(iii)



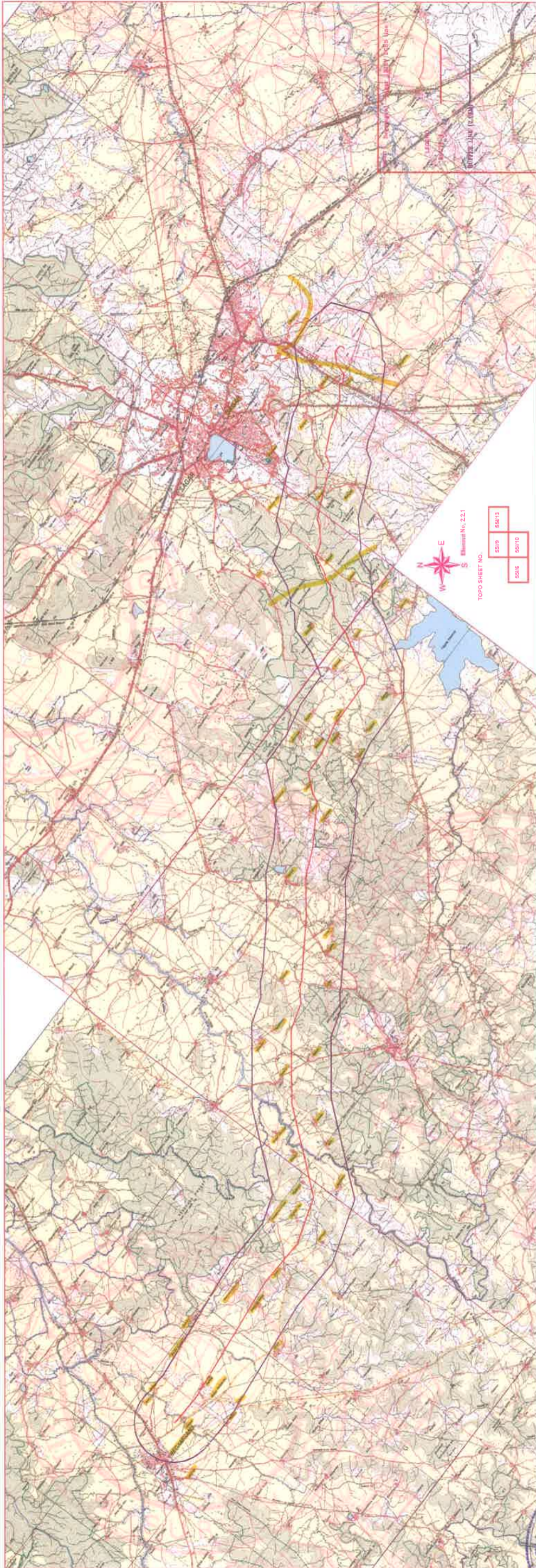
26/5/2022



MAP No. 2  
 P. No. 59/2021  
 TL/3 dt. 13.05.2022  
 S.No. 1 (iv)



Stamp: TRANSMISSION PACKAGE II  
 Signature: [Handwritten Signature]  
 Date: 26/5/2022

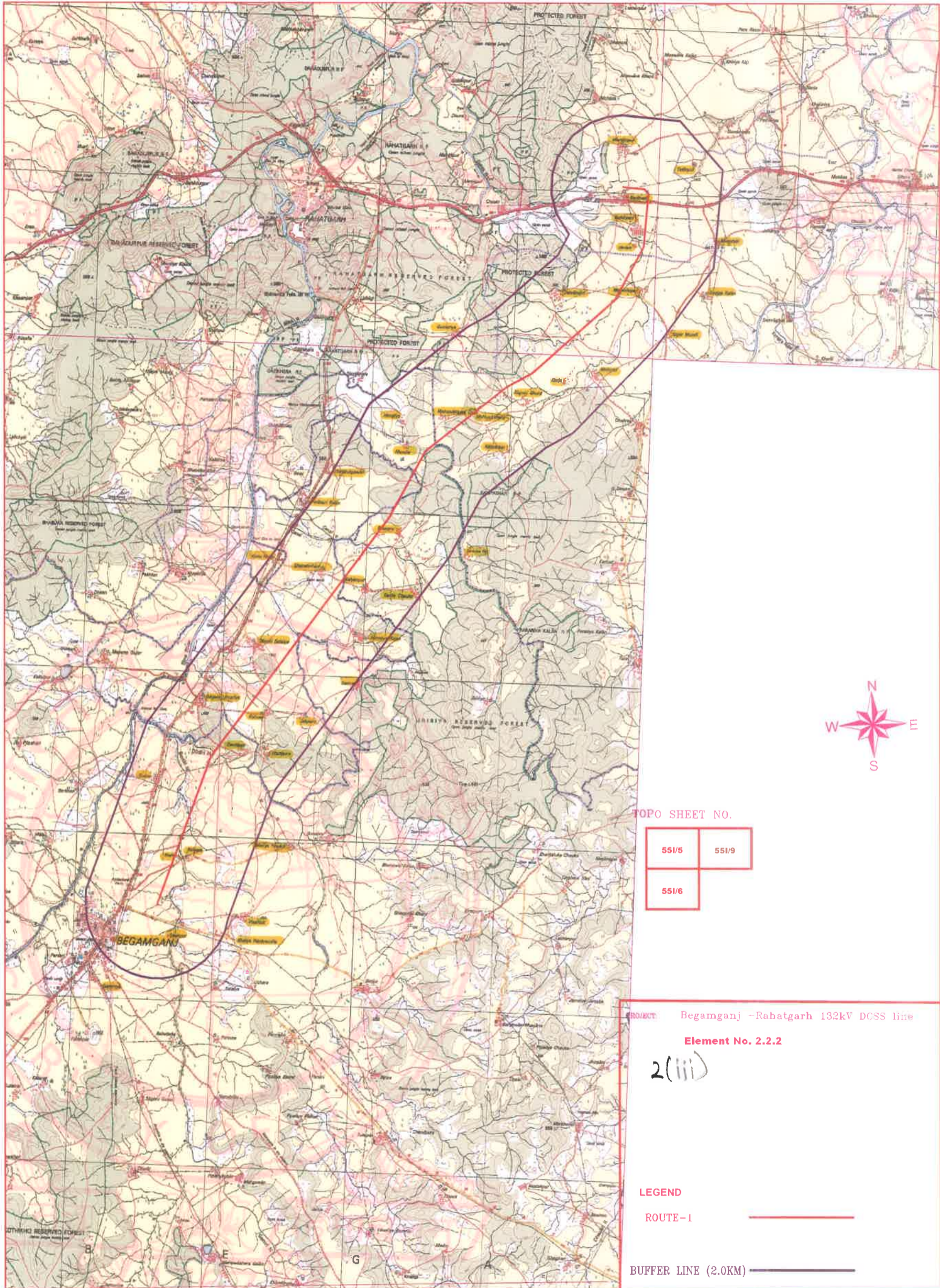


2(ii)

MAP No.3  
 P.No. 59/2021  
 PL/3 dt. 13.05.2021  
 SC.No 2(ii)



26.05.2022

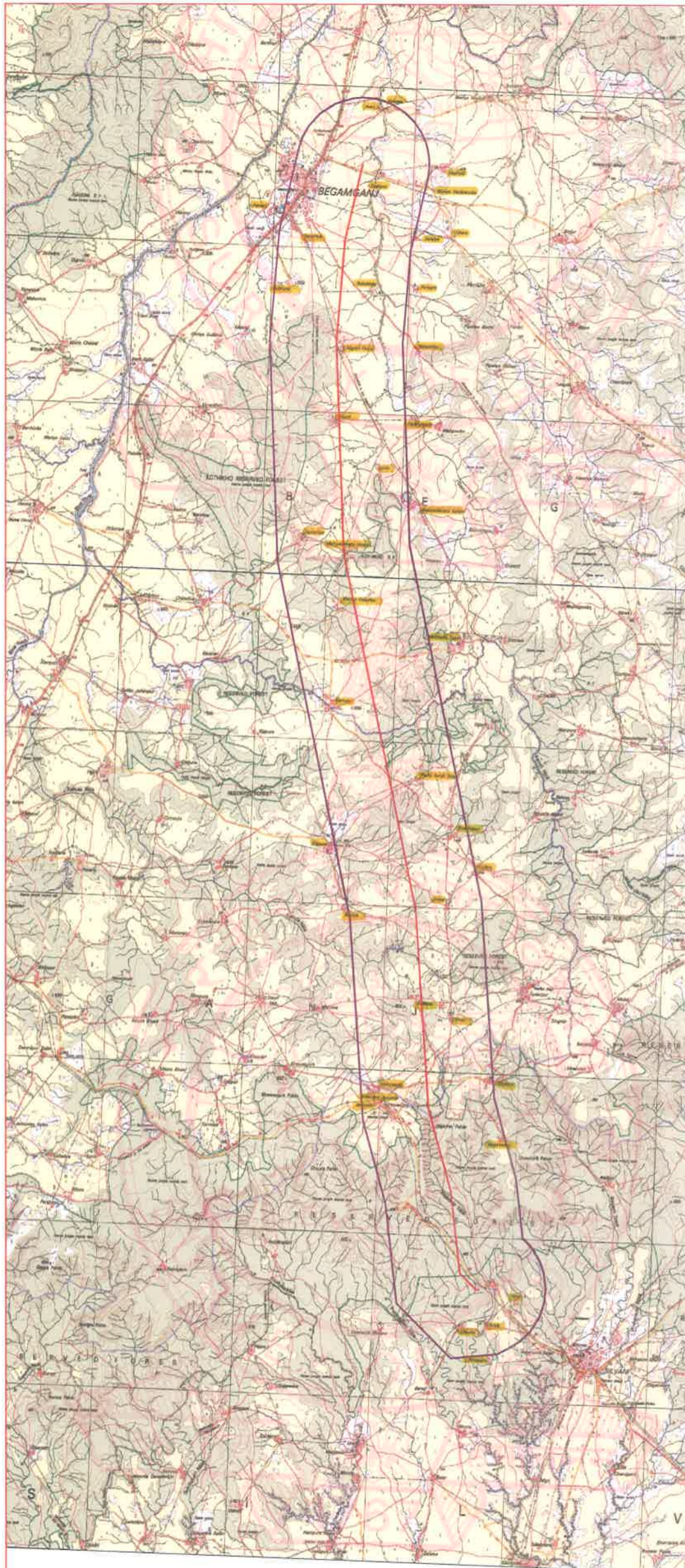


PRODUCED BY AN AUTODESK EDUCATIONAL PRODUCT

PRODUCED BY AN AUTODESK EDUCATIONAL PRODUCT

MAP.NO.04  
 P.NO.59/2021  
 TL/301  
 12.05.2022  
 S.NO.2(iii)





PRODUCED BY AN AUTODESK EDUCATIONAL PRODUCT

PRODUCED BY AN AUTODESK EDUCATIONAL PRODUCT



TOPO SHEET NO.

55/6

55/7

PROJECT Begamganj -Silwani 132kV DCSS line

Element No. 2,2,3

2(iv)

LEGEND

ROUTE-1

BUFFER LINE (2.0KM)

MAP No. 05

P.No. 59/2021

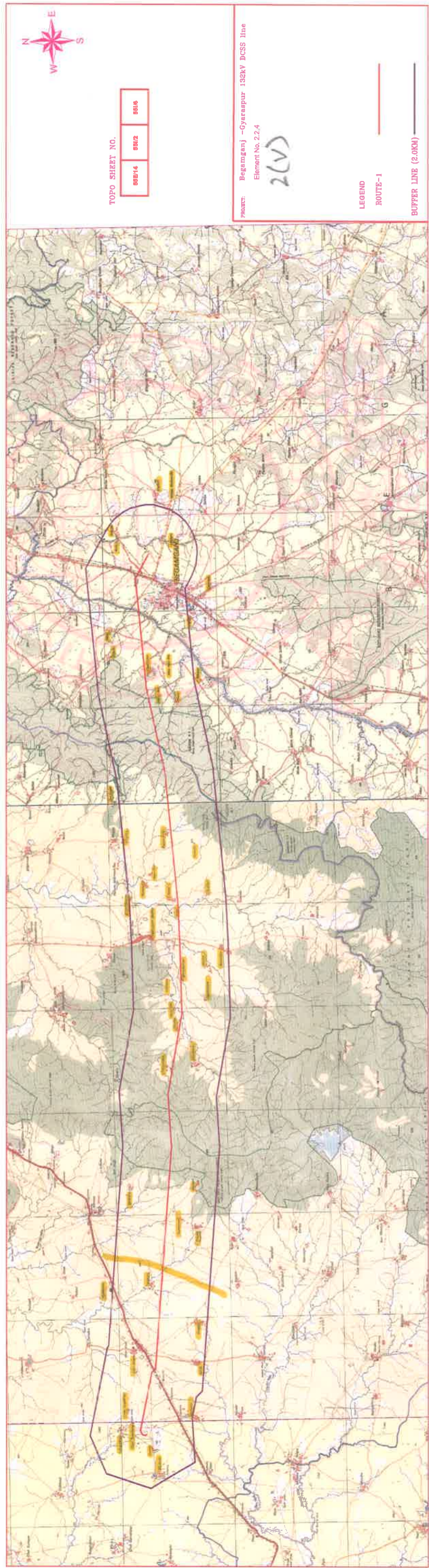
TL/3 dt. 17.05.2022

S.No. 2(iv)





PRODUCED BY AN AUTODESK EDUCATIONAL PRODUCT

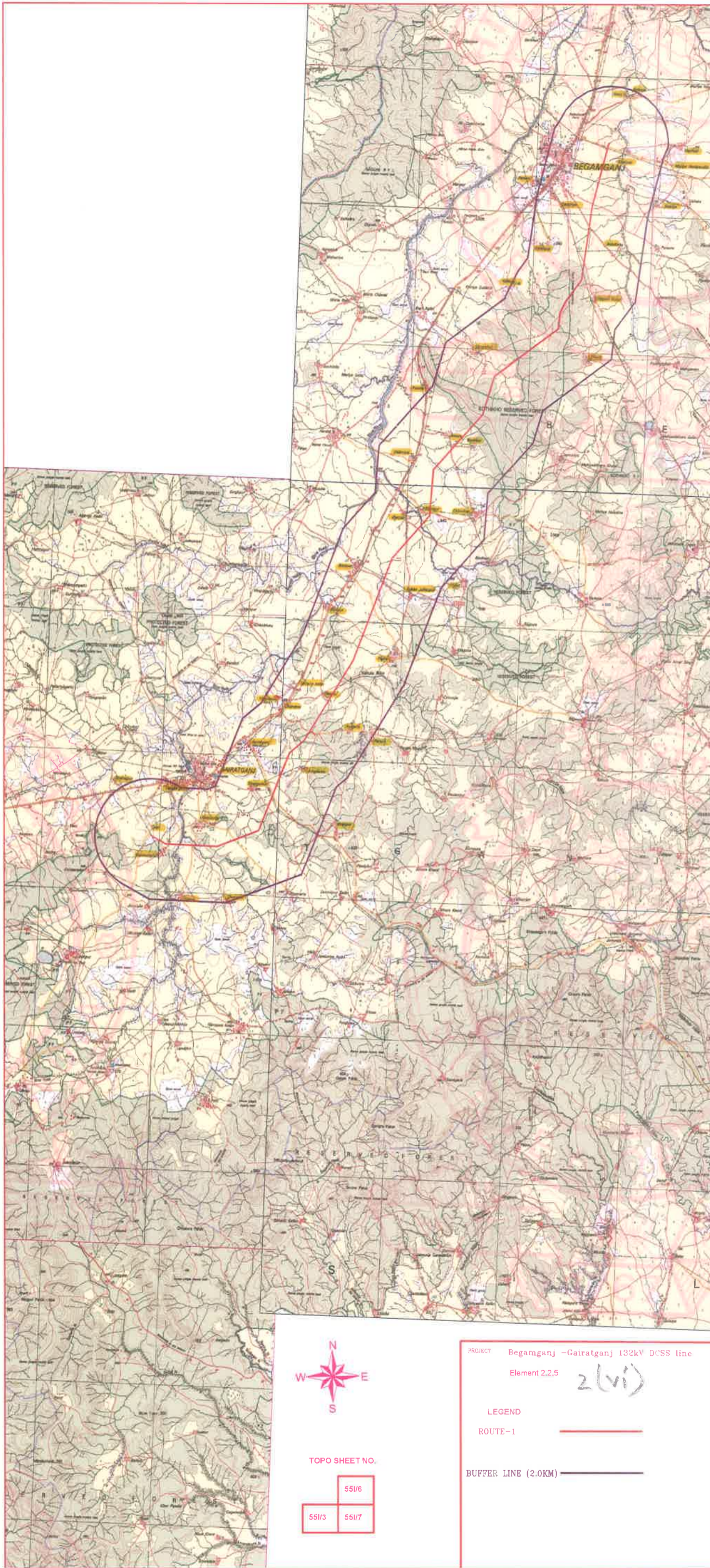


PRODUCED BY AN AUTODESK EDUCATIONAL PRODUCT

MAP NO. 06  
 P. NO. 59/2021  
 RL/3 Dt. 13.05.2022  
 S. NO. 2(V)



PRODUCED BY AN AUTODESK EDUCATIONAL PRODUCT



TOPO SHEET NO.

	55I/6
55I/3	55I/7

PROJECT Begamganj -Gairatganj 132kV DCSS line  
 Element 2.2.5 2(vi)

LEGEND

ROUTE-1



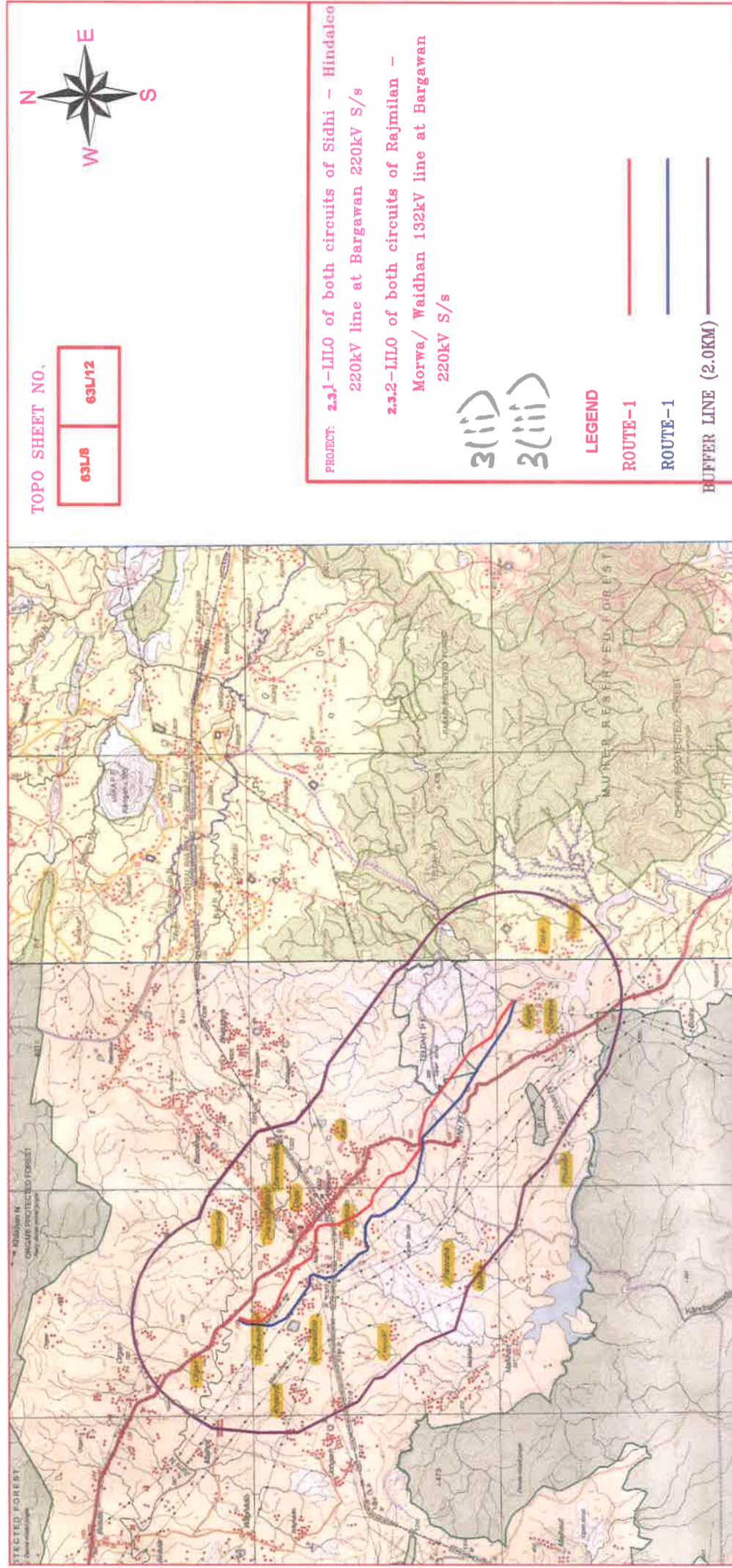
BUFFER LINE (2.0KM)



MAP NO. 07  
 P.No. 59/2021  
 TL/3 dt. 17/05/2022  
 S.No. 2(vi)

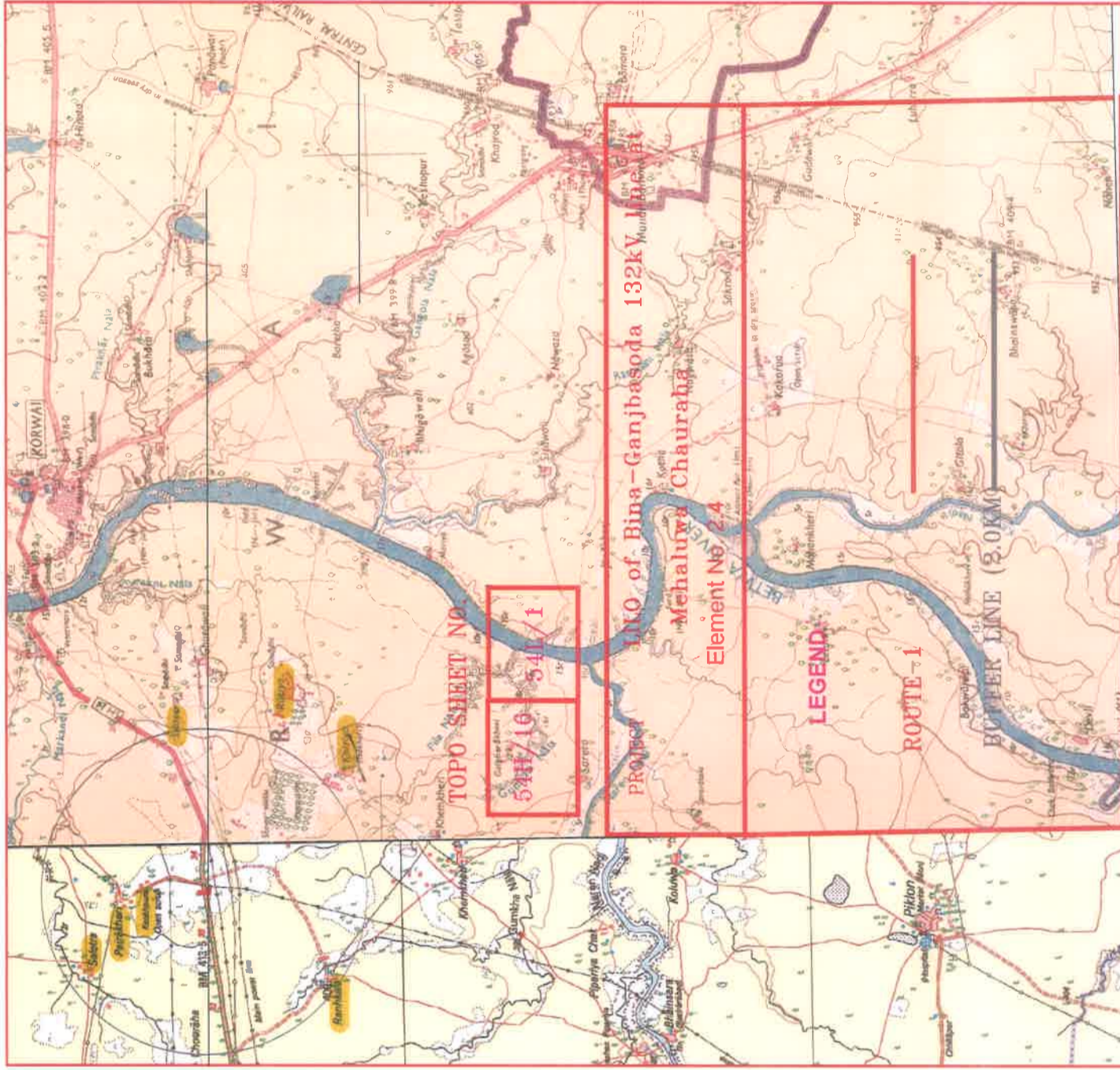


26/05/2022



MAP No. 08  
 P.No. 59/2021  
 TL/3 dt. 17.05.2022  
 S.No. 3(ii), 3(iii)

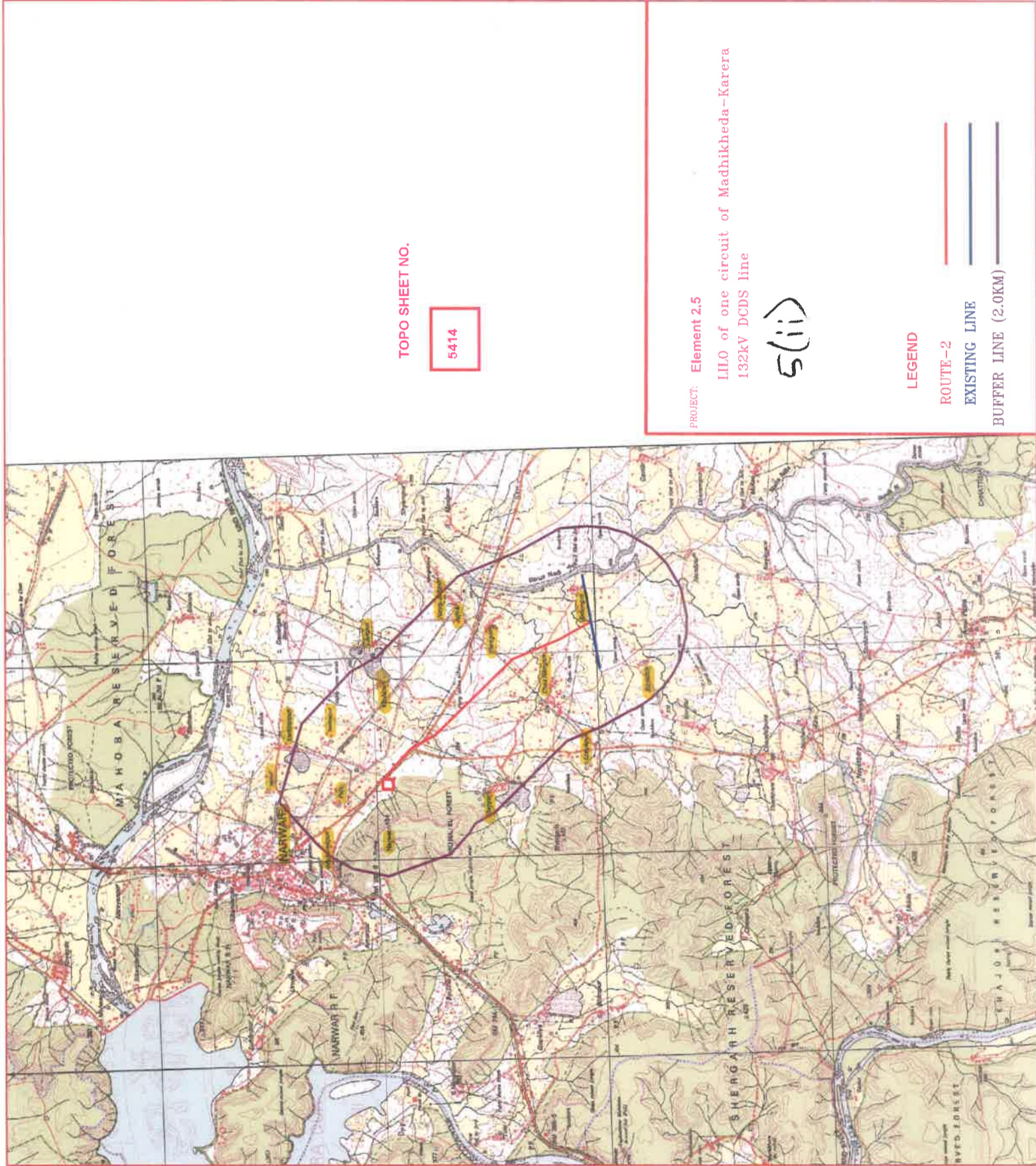




(ii)

MAP No. 09  
 P.No. 59/2021  
 TL/3 dt. 12.05.2022  
 S.No. 4(ii)





TOPO SHEET NO.

5414

PROJECT: **Element 2.5**  
 L110 of one circuit of Madhikheda-Karera  
 132kV DCDS line

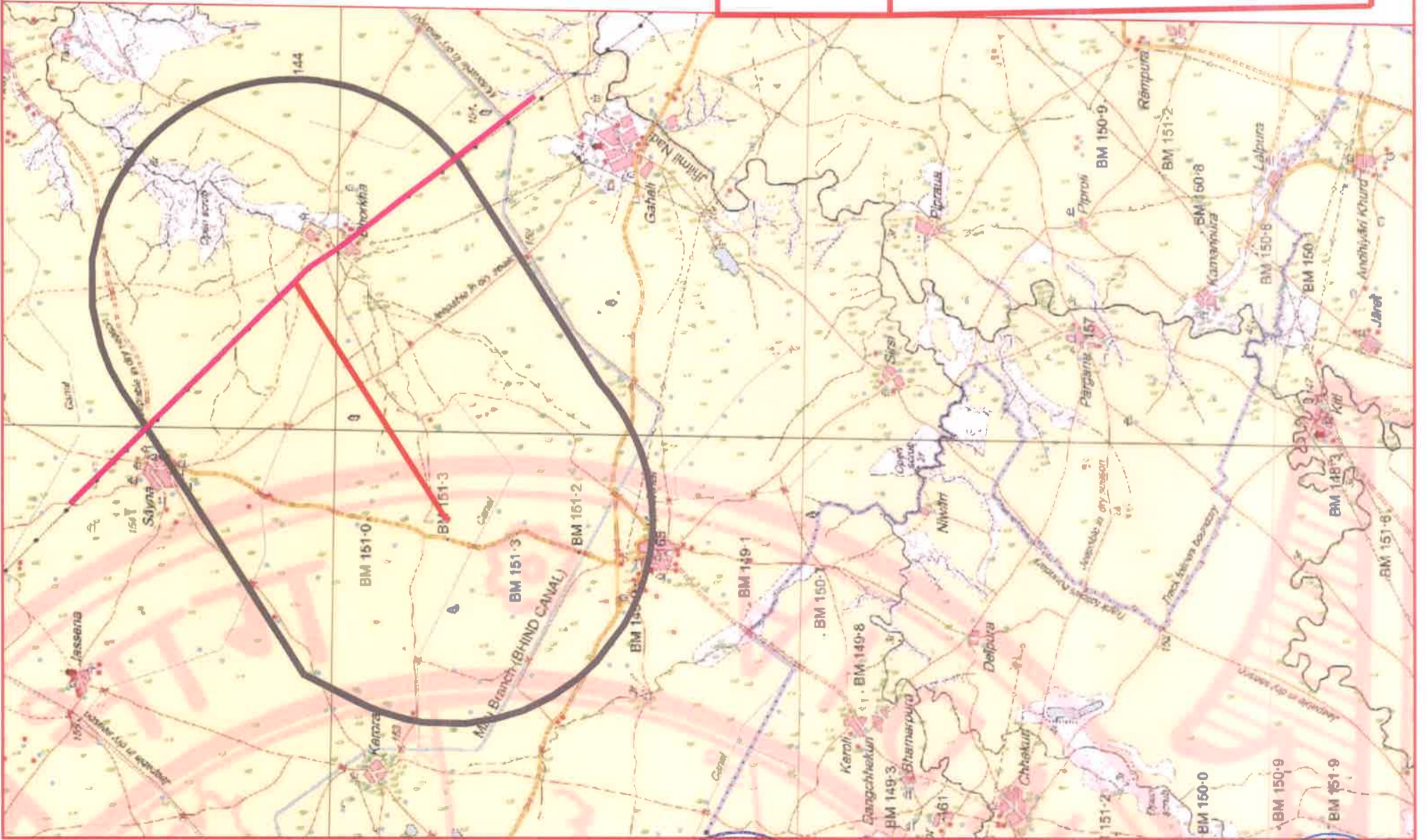
5(ii)

LEGEND

- ROUTE-2
- EXISTING LINE
- BUFFER LINE (2.0KM)

MAP NO. 10  
 P. NO. 59/2021  
 TL/3 AT 17.05.2022  
 S. NO. 5(ii)





TOPO SHEET NO.

54J/11

PROJECT MP- 2.6.1 LILO of Mehgaon 220-  
Seondha 132kV SC line at Kanather

6(ii)

LEGEND

ROUTE-1

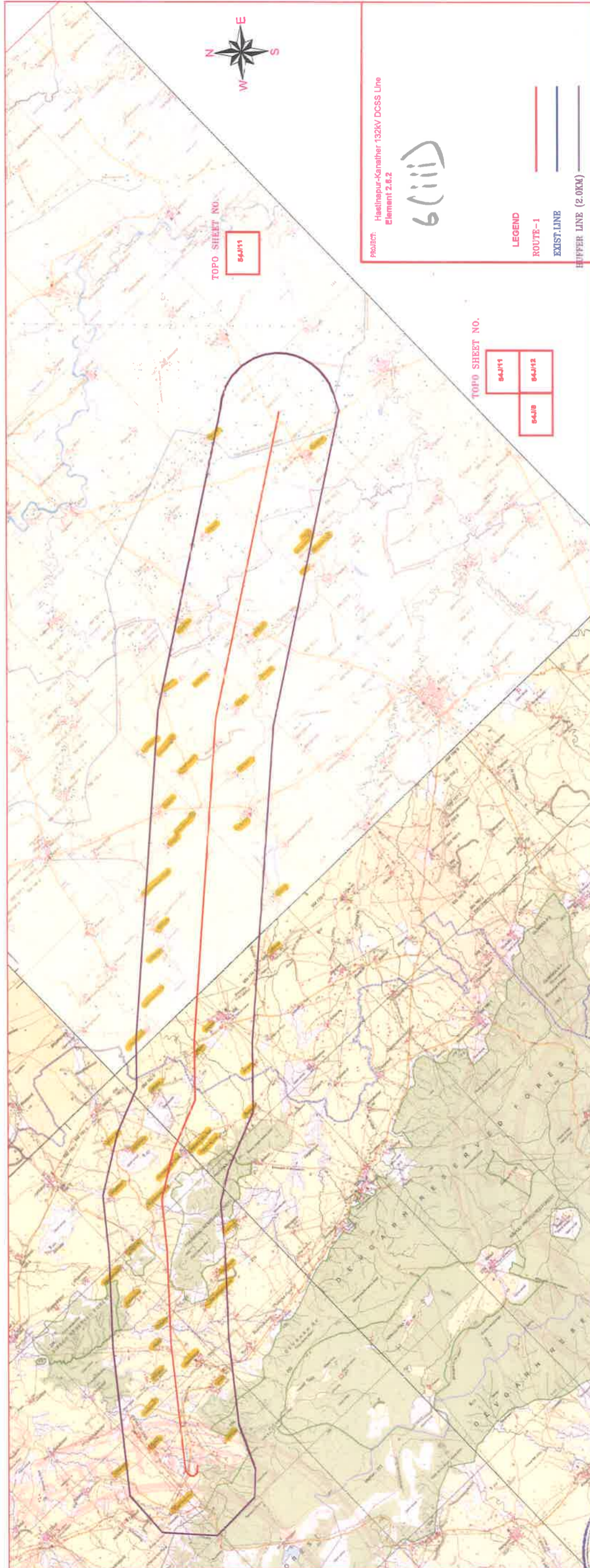
BUFFER LINE (2.0KM)



MAP NO. 11  
 P.No. 59/2021  
 17/3 dt. 17.05.2022  
 S.No. 6(ii)



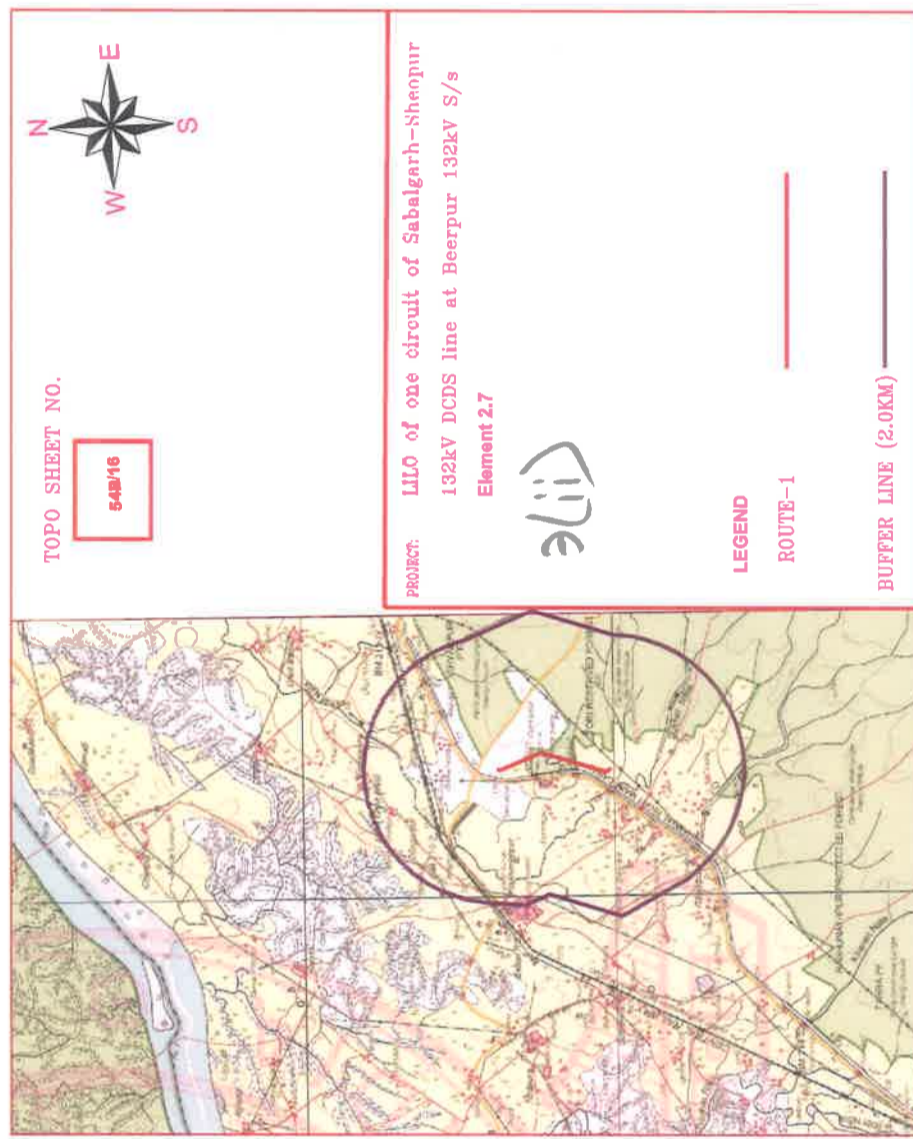
PRODUCED BY AN AUTODESK EDUCATIONAL PRODUCT



PRODUCED BY AN AUTODESK EDUCATIONAL PRODUCT

MAP No. 12  
 P.No. 59/2021  
 TL/3 Dt. 13.05.2022  
 S.No. 6(iii)

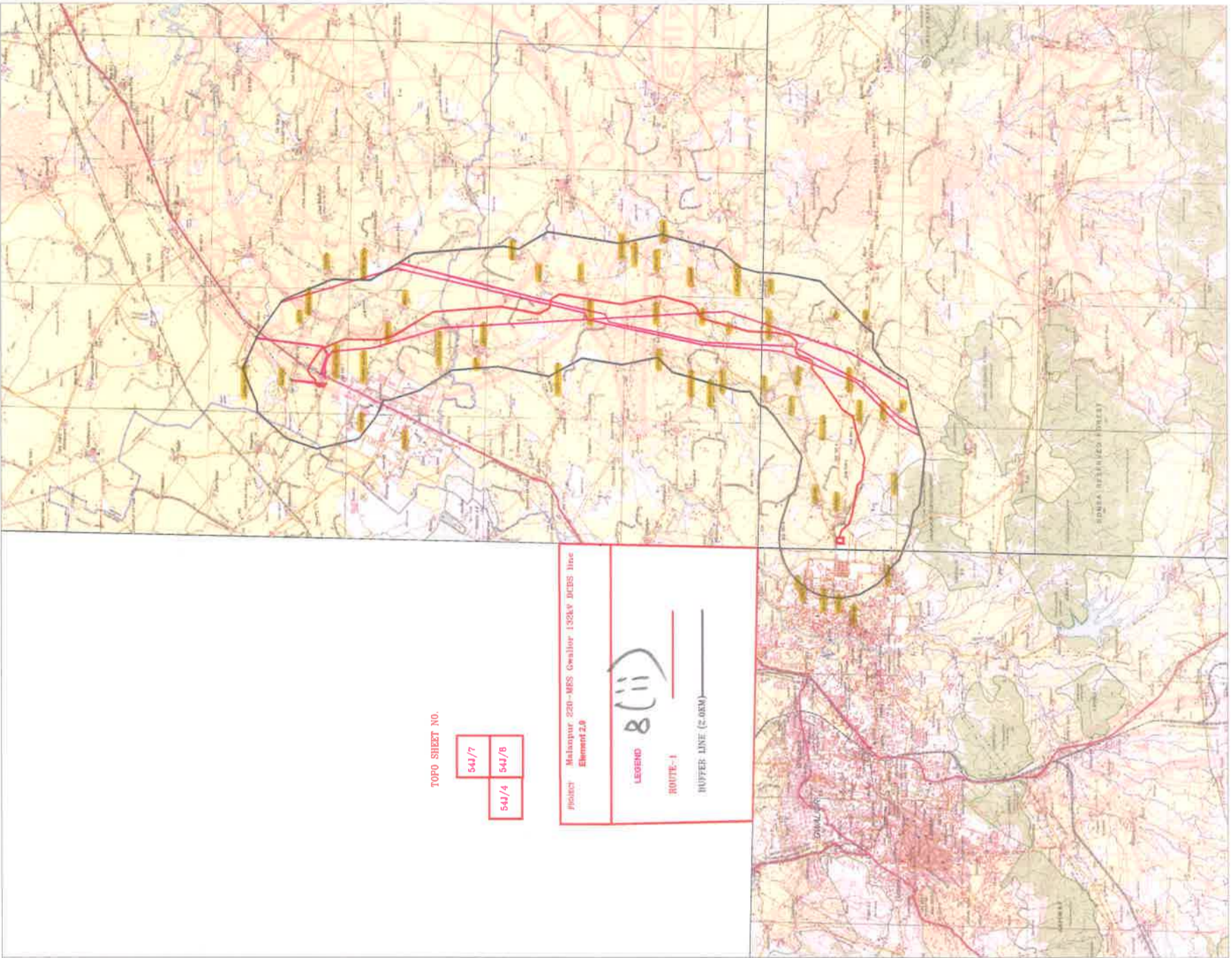




MAP NO. 13  
 P.No. 59/2021  
 TL/3 Dt. 13.05.2022  
 S.No. 2(ii)

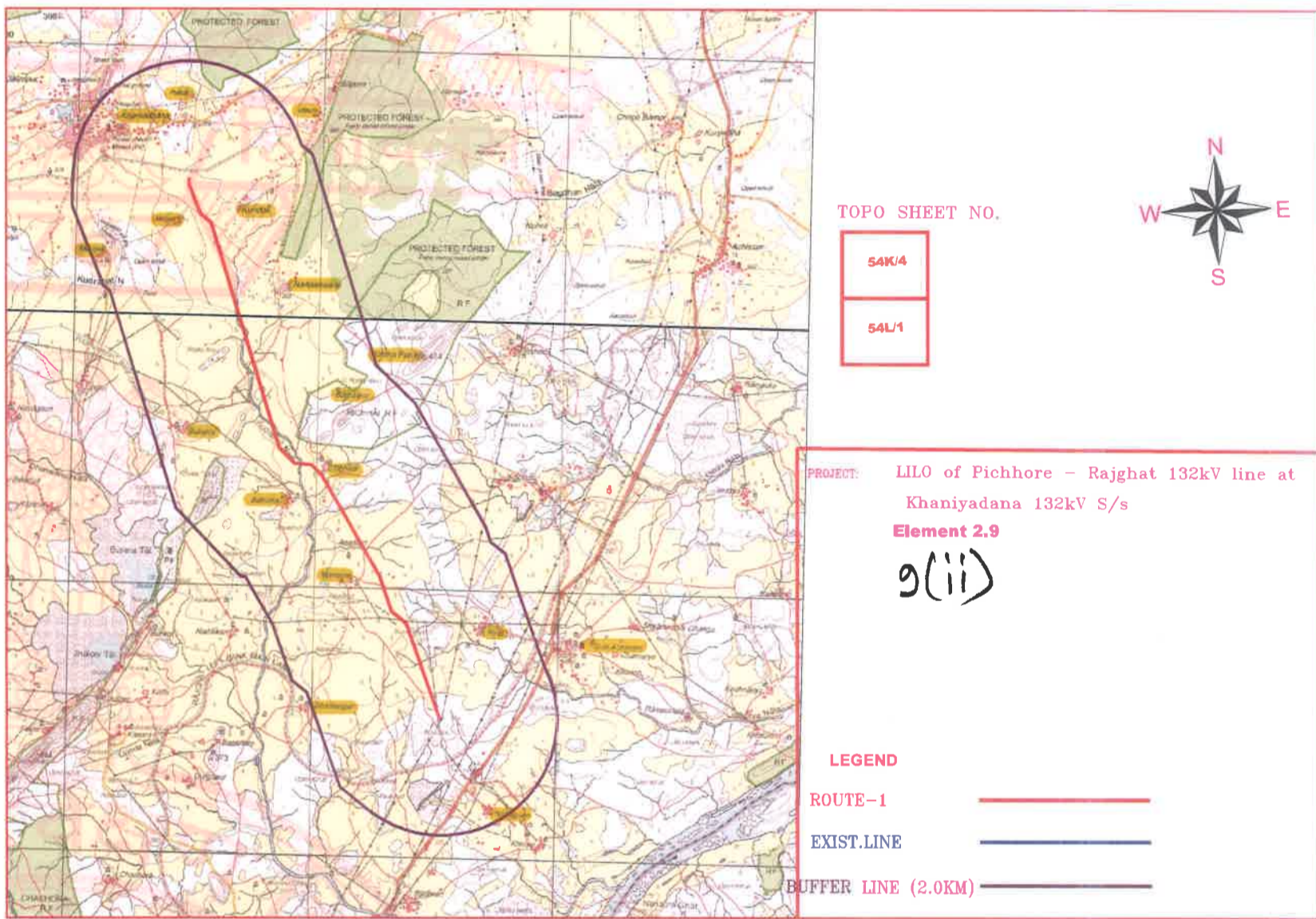






MAP No. 14  
 P.No. 59/2021  
 RL/3 dt. 17.05.2022  
 S.No. 8(ii)

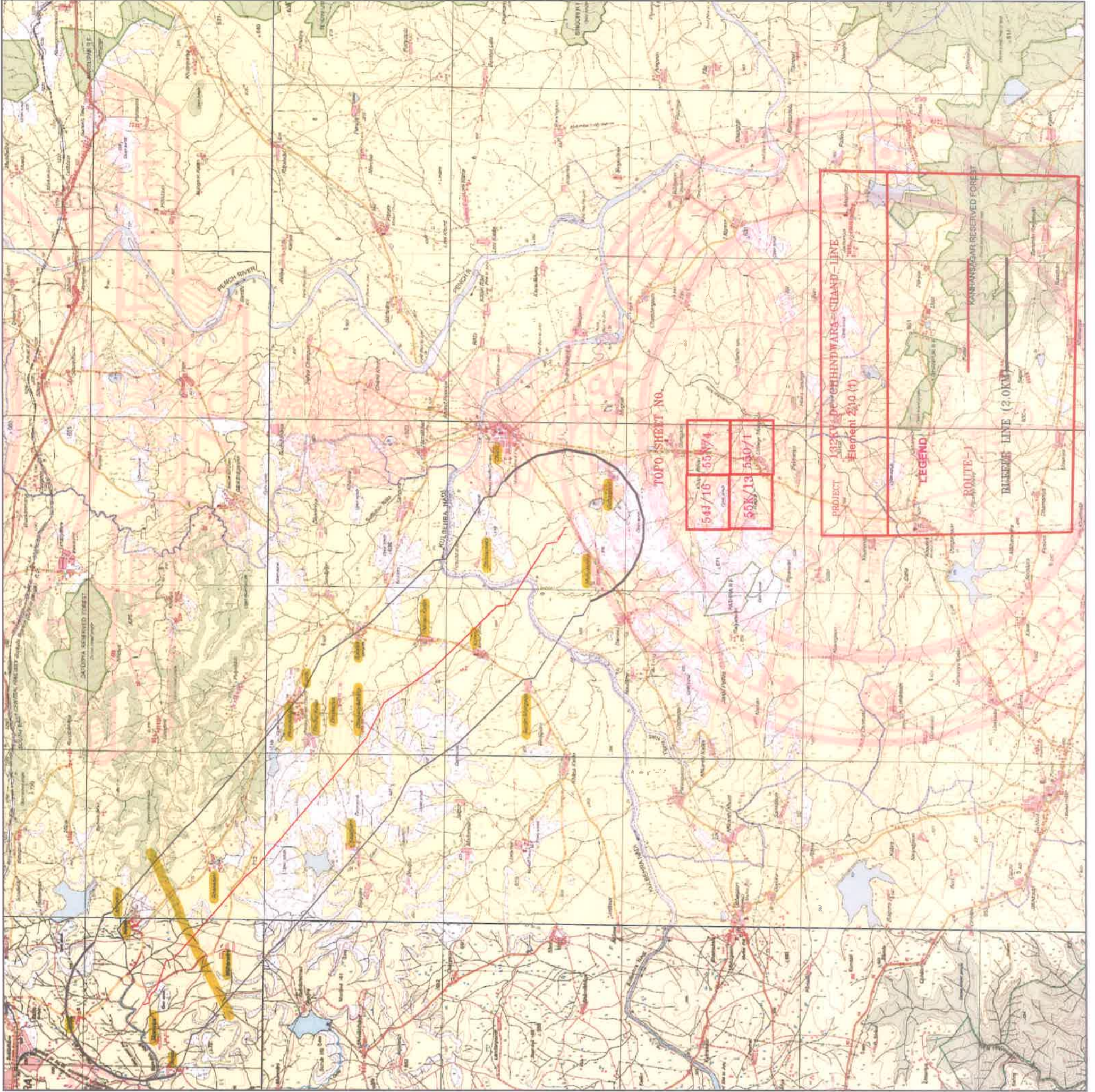




MAP NO. 15  
P.No. 53/2021  
TL/3 At. 13.05.2022  
S.No. 9(ii)

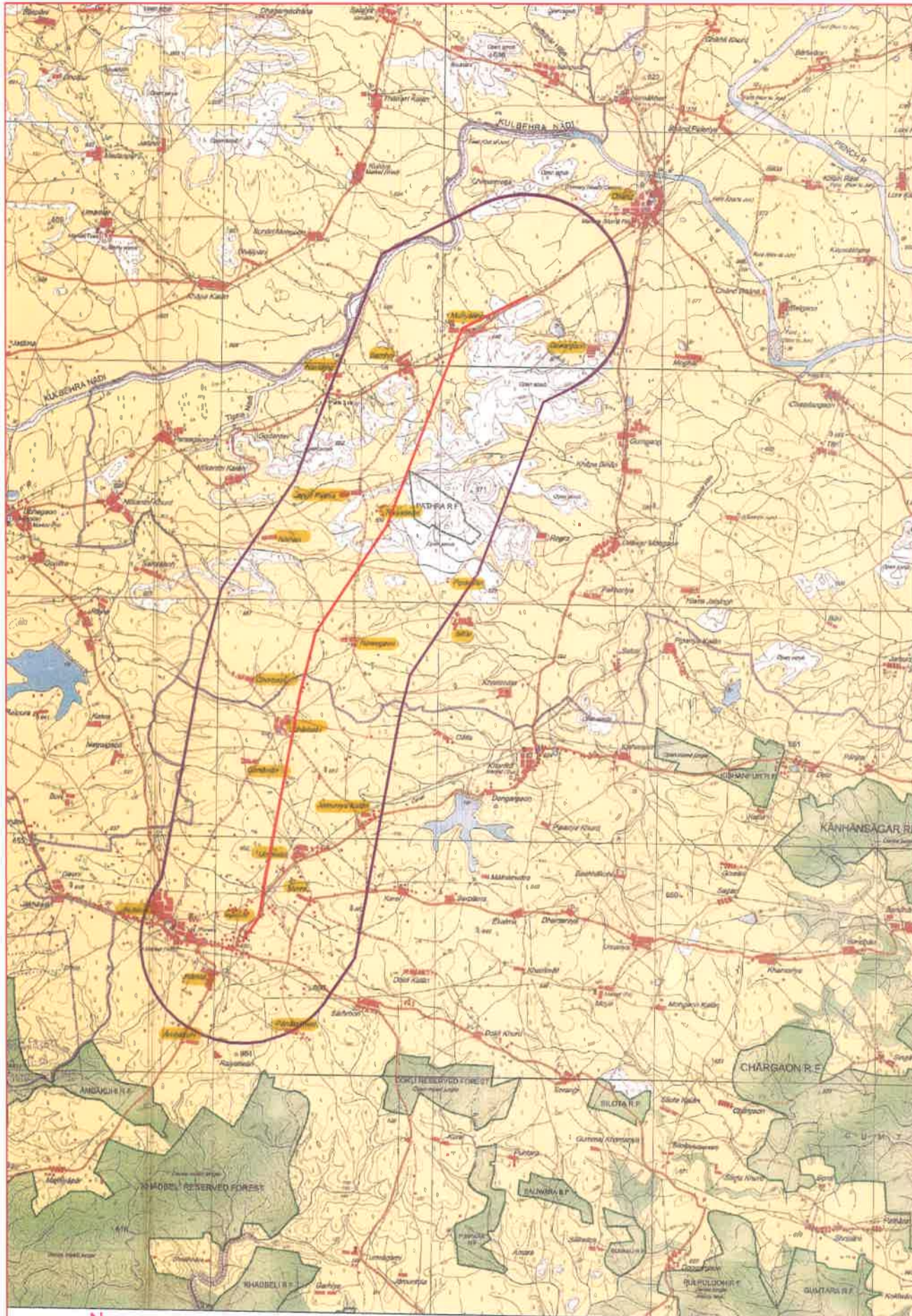


10(ii)



MAP No.16  
 P.No. 59/2021  
 TL/3 dt. 13.05.2022  
 S.No. 10(ii)





TOPO SHEET NO.

550/1

PROJECT: Chhindwara220-Chand-Bichhua 132kV DCSS line  
Element 2.10(2)

10(ii)

LEGEND

ROUTE-1

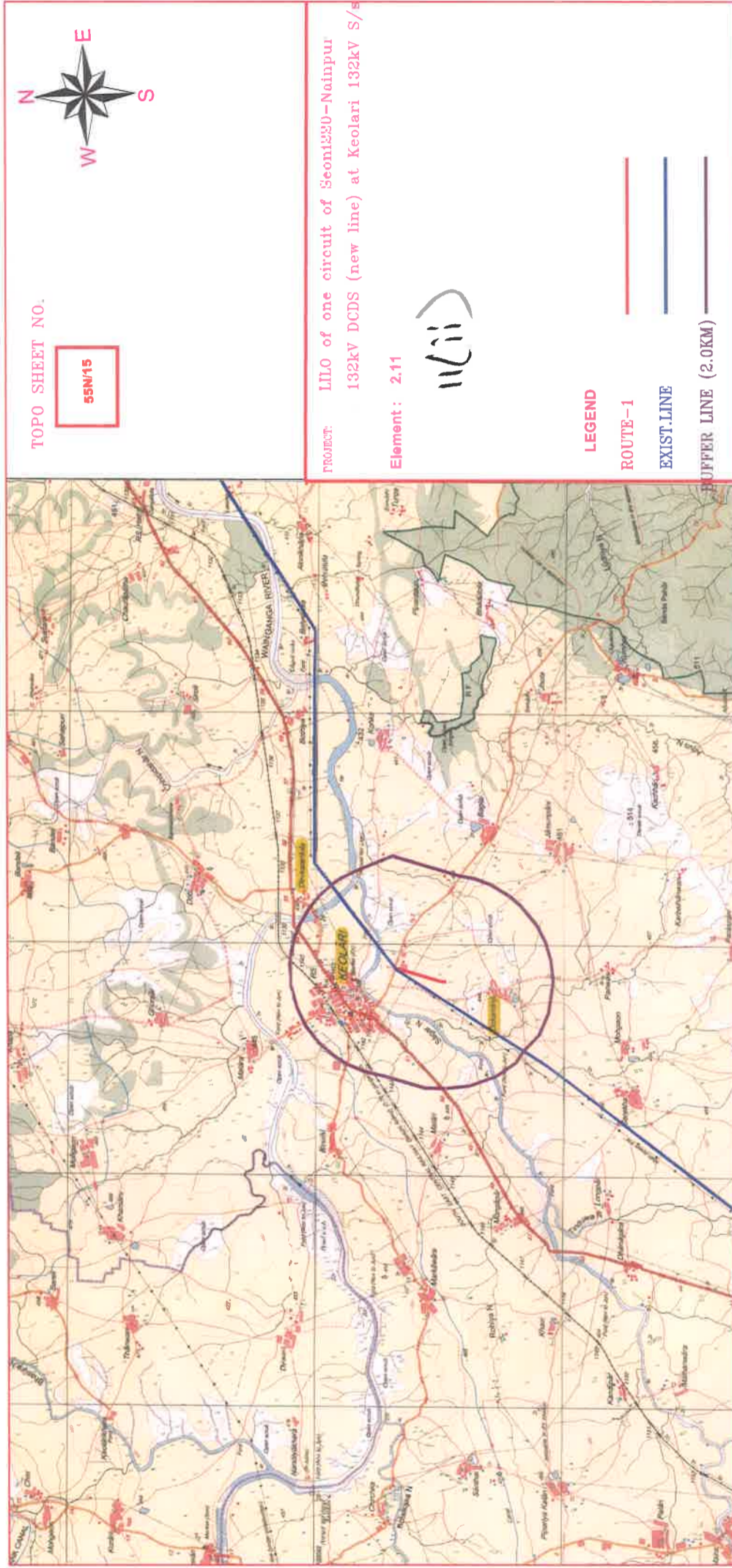
ROUTE-1

BUFFER LINE (2.0KM)

MAP No. 17  
 P.No. 59/2021  
 RL/3 dt. 13.05.2022  
 S.No. 10(ii)

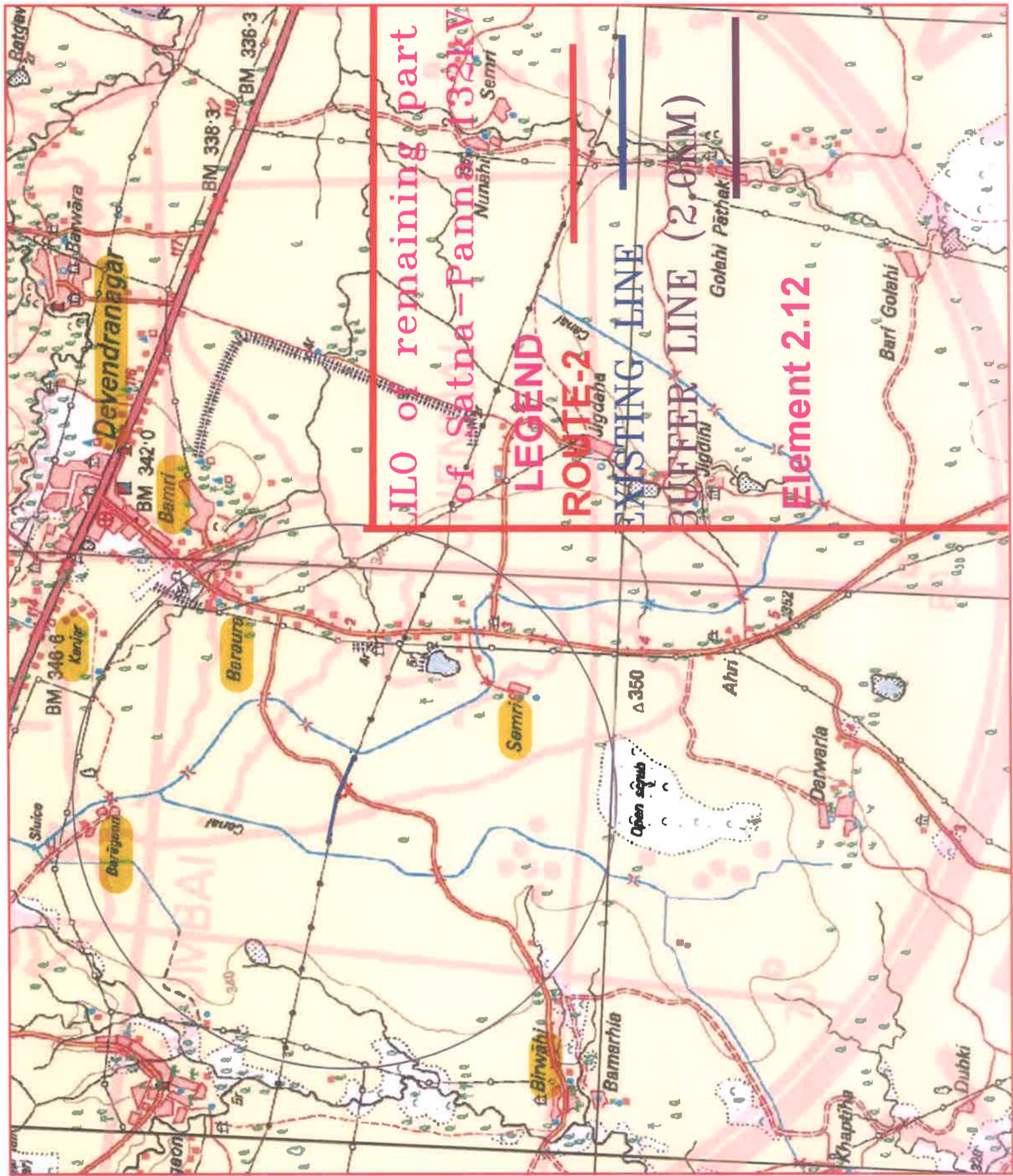


26/05/2022



MAP NO. 18  
 P. NO. 59/2021  
 RL/3 Dt. 13.05.2022  
 S. NO. 11(ii)





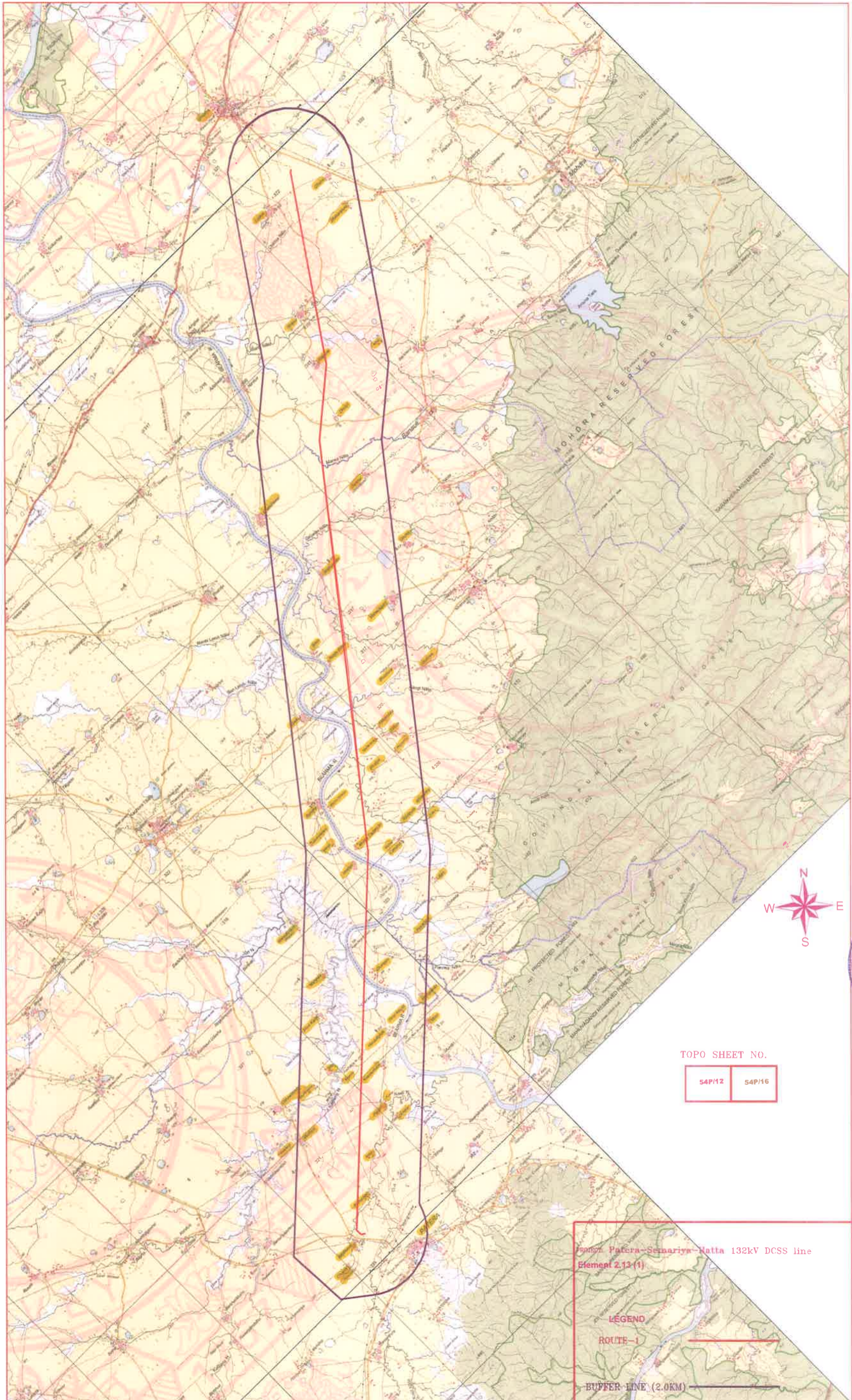
12(ii)

MAP No. 19  
 P.No. 59/2021  
 TL/3 Dt. 17.05.2022  
 S.No. 12(ii)



PRODUCED BY AN AUTODESK EDUCATIONAL PRODUCT

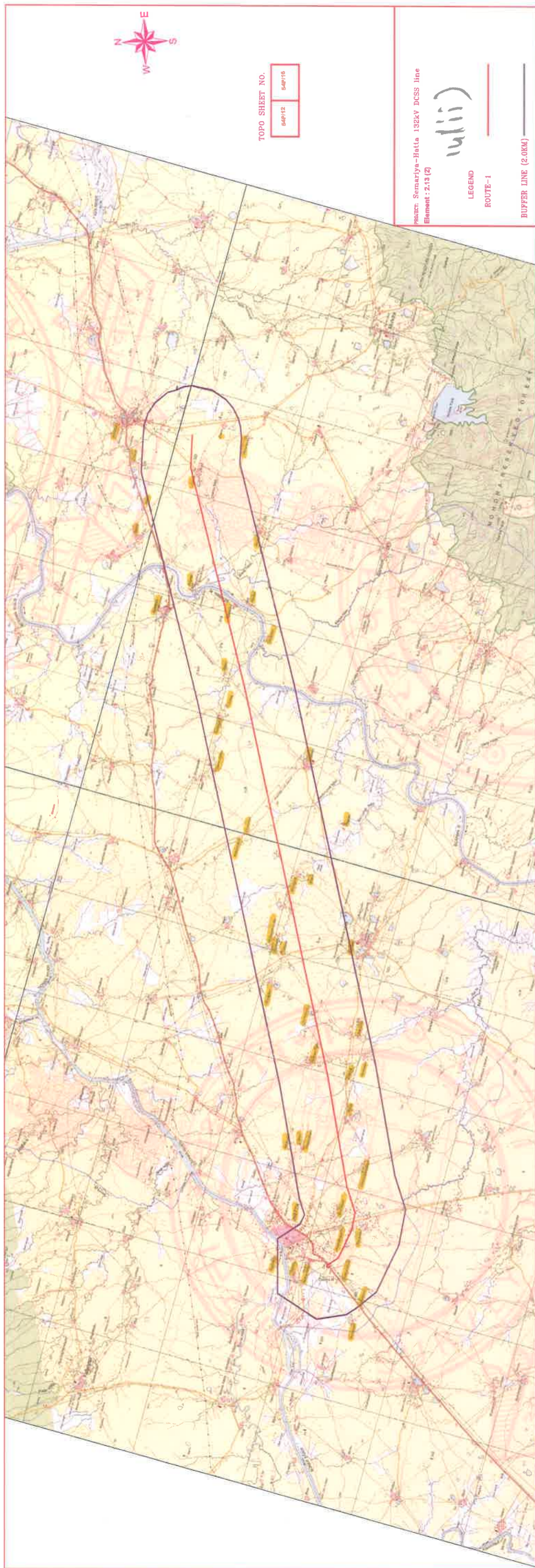
PRODUCED BY AN AUTODESK EDUCATIONAL PRODUCT



MAP.No.20  
P.No.59/2021  
UL3 st.  
13/05/2022  
13(ii) S.No.



PRODUCED BY AN AUTODESK EDUCATIONAL PRODUCT



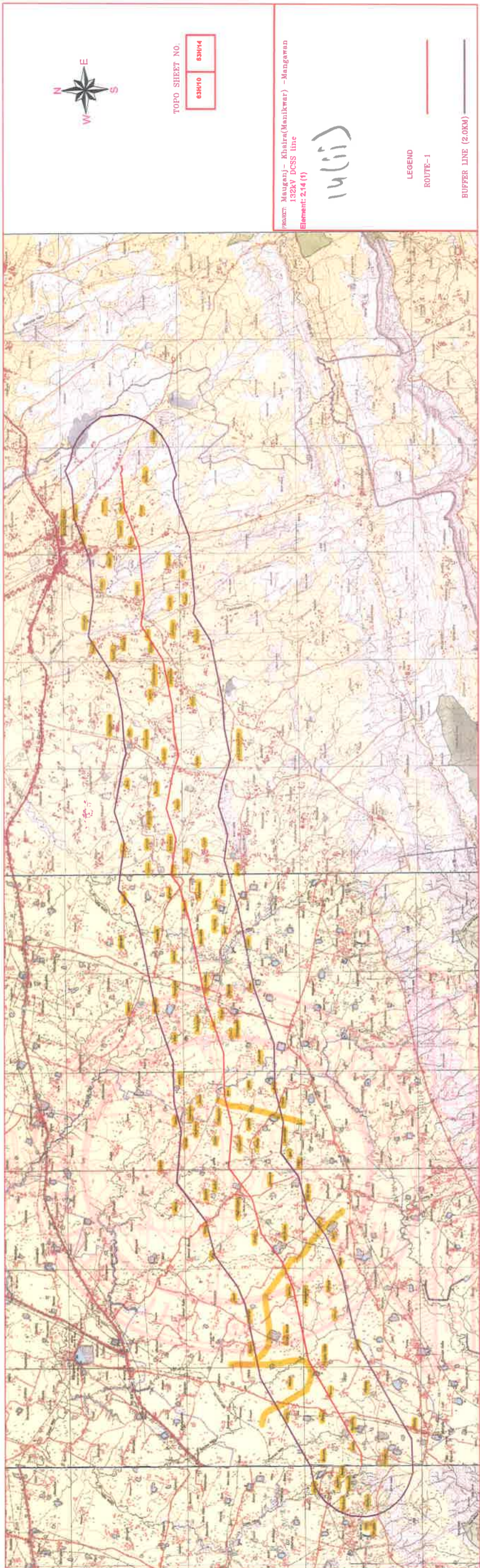
PRODUCED BY AN AUTODESK EDUCATIONAL PRODUCT

MAP NO. 21  
 P.No. 59/2021  
 RL/3 Dt. 17/05/2022  
 S.No. 14(ii)





PRODUCED BY AN AUTODESK EDUCATIONAL PRODUCT

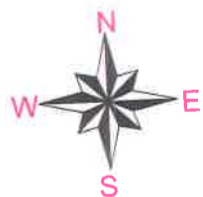
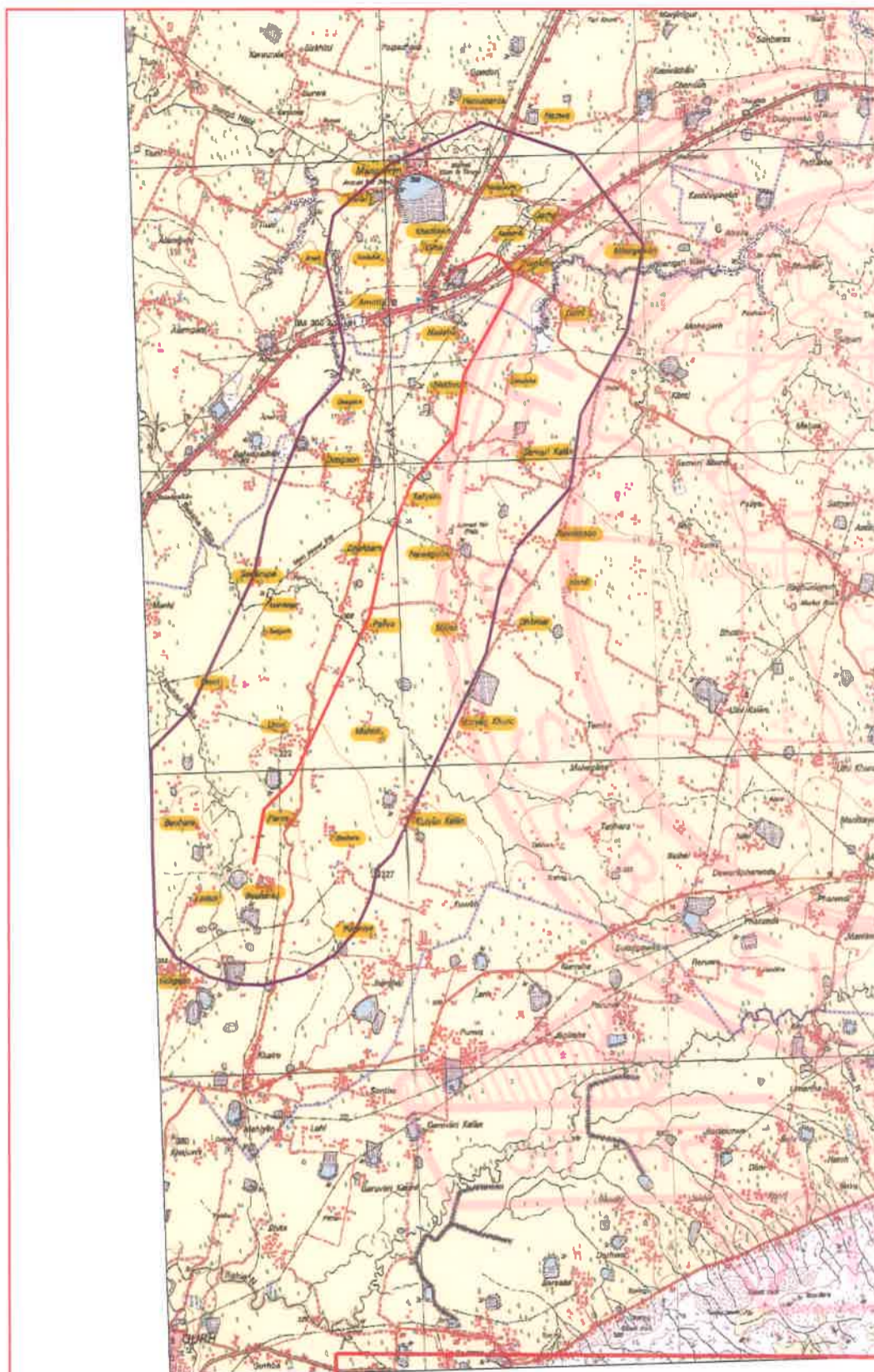


PRODUCED BY AN AUTODESK EDUCATIONAL PRODUCT

PRODUCED BY AN AUTODESK EDUCATIONAL PRODUCT

MAP NO. 22  
 P.No. 59/2021  
 TL/3 dt. 17/05/2022  
 S.No. 14(ii)





TOPO SHEET NO.



Project:- Khaira-Mangawan  
132kV DCSS line

Element: 2.14 (2)

14(ii)

**LEGEND**

ROUTE-1



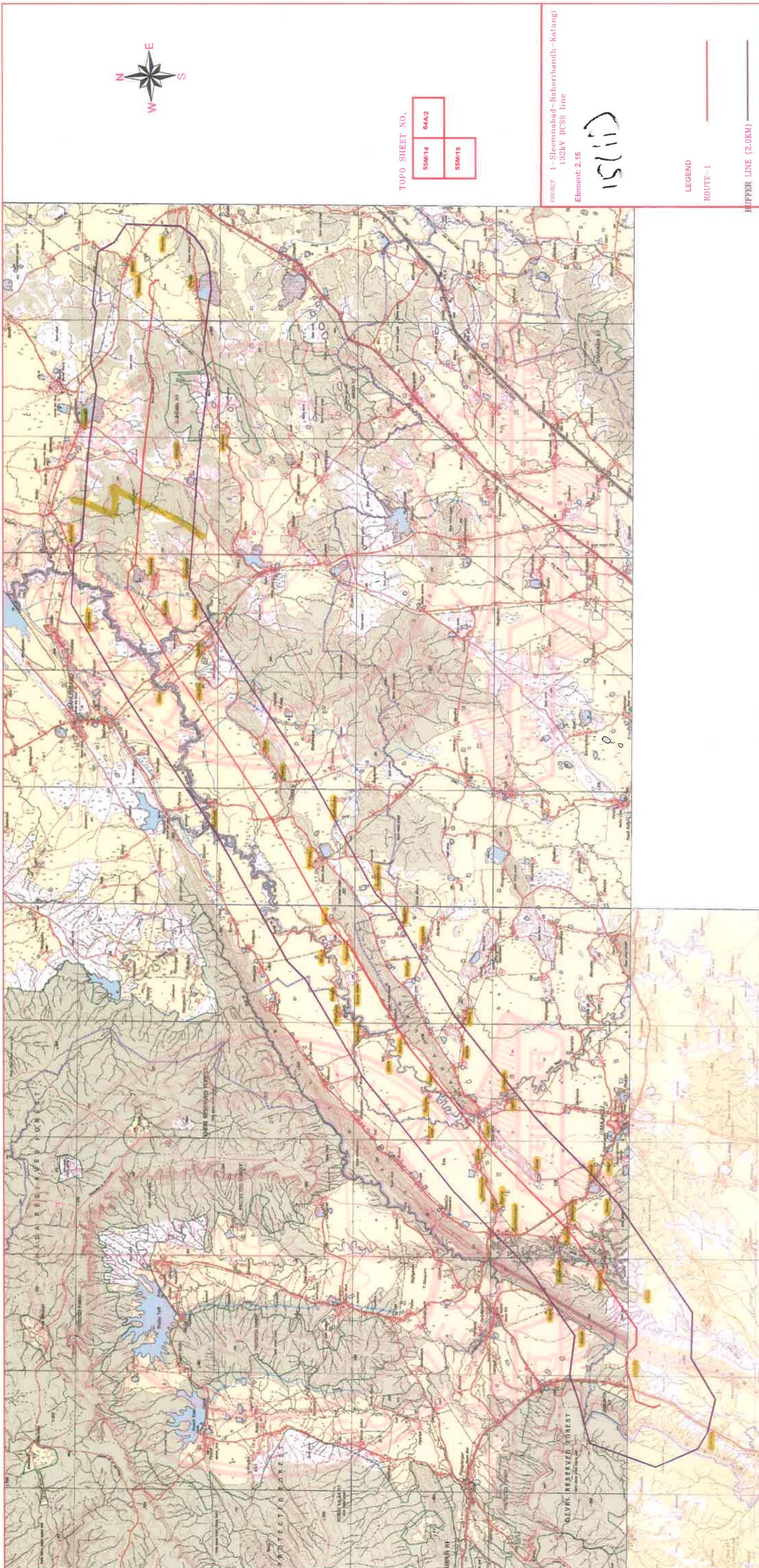
BUFFER LINE (2.0KM)



MAP No. 23  
 P.No. 59/2021  
 RL/3 dt. 17/05/2022  
 S.No. 14(ii)



26/05/2022



TOPO SHEET NO.

SSM/14	64A/2
SSM/15	

PROJECT 1 - Sleemabad - Bahoribandh - Katangi  
132KV DCSS line

Element: 2.15

15(ii)

LEGEND

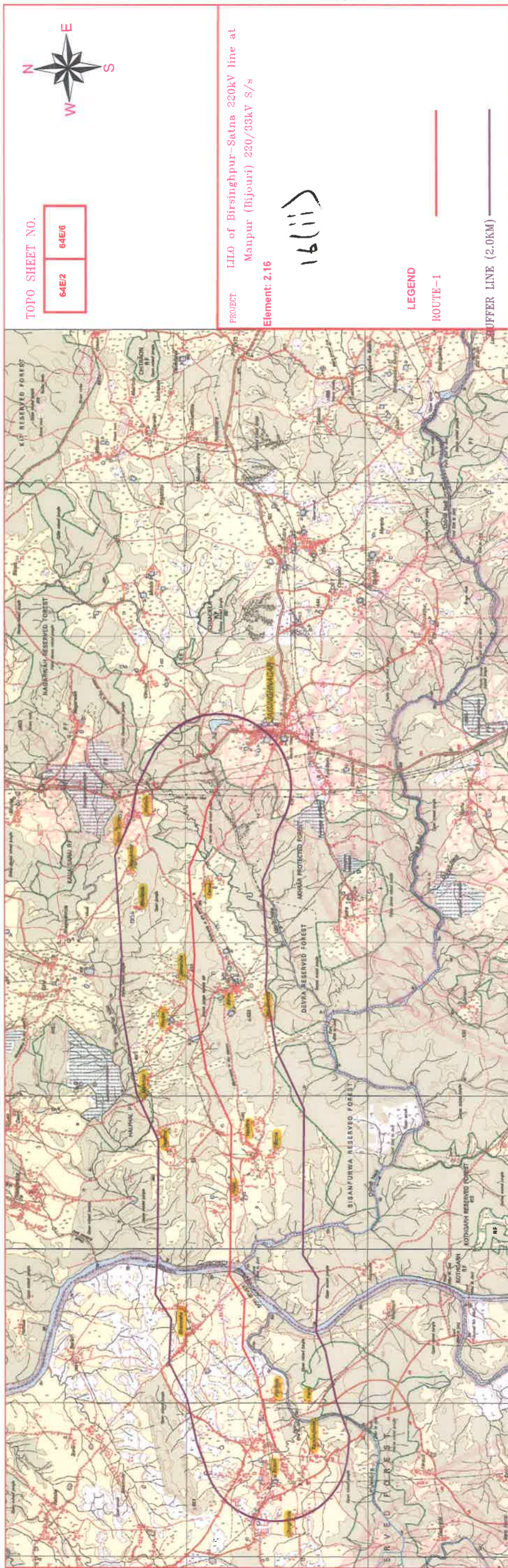
ROUTE-1

BUFFER LINE (2.0KM)



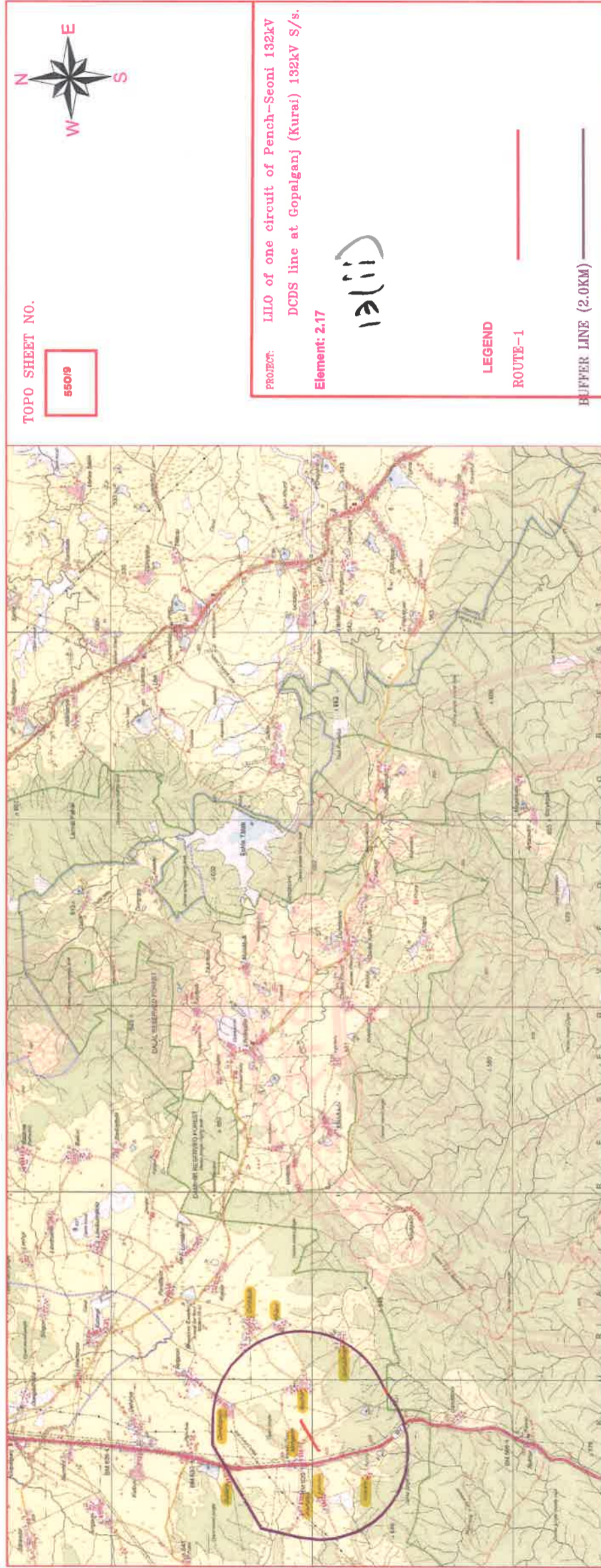
MAP No. 24  
P.No. 59/2021  
TL/3 dt. 17.05.2022  
S.No. 15(ii)





MAP No. 25  
P.No. 59/2021  
TL/3 dt. 17.05.2022  
S.No. 16(ii)





TOPO SHEET NO.

55019



PROJECT: LILLO of one circuit of PENCH-SEONI 132kV

DCDS line at Gopalganj (Kurai) 132kV S/s.

Element: 2.17

13(ii)

LEGEND

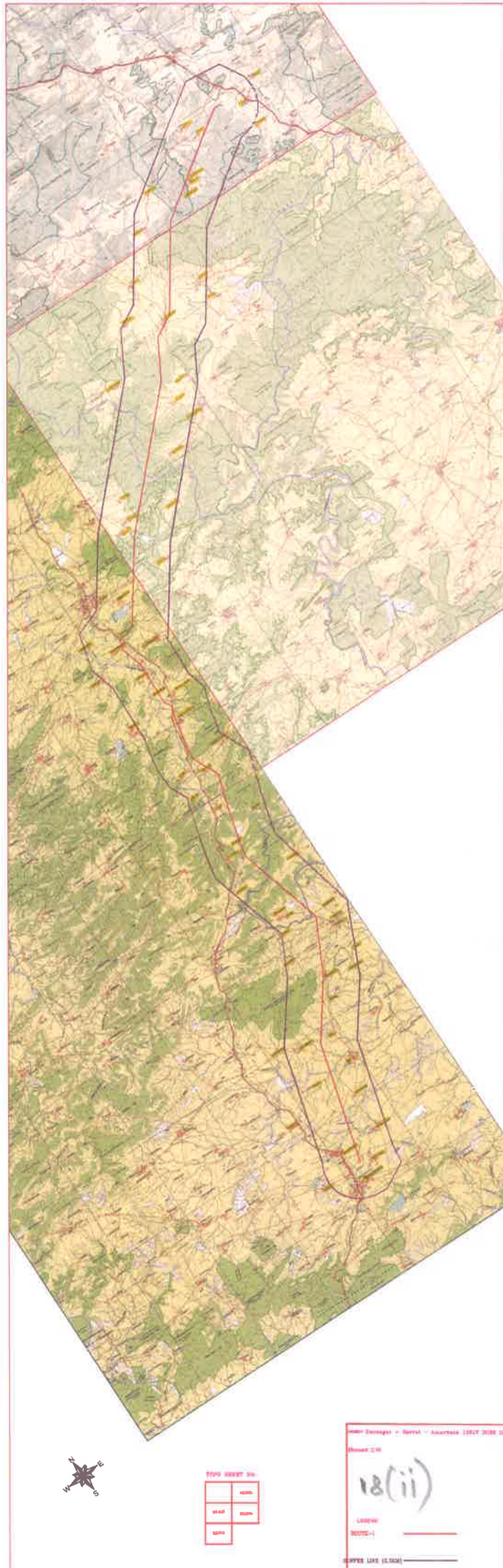
ROUTE-1

BUFFER LINE (2.0KM)

MAP NO. 26  
 P. NO. 59/2021  
 TL/3 At 17.05.2022  
 S. No. 13(ii)



*[Handwritten Signature]*  
 26/05/2022

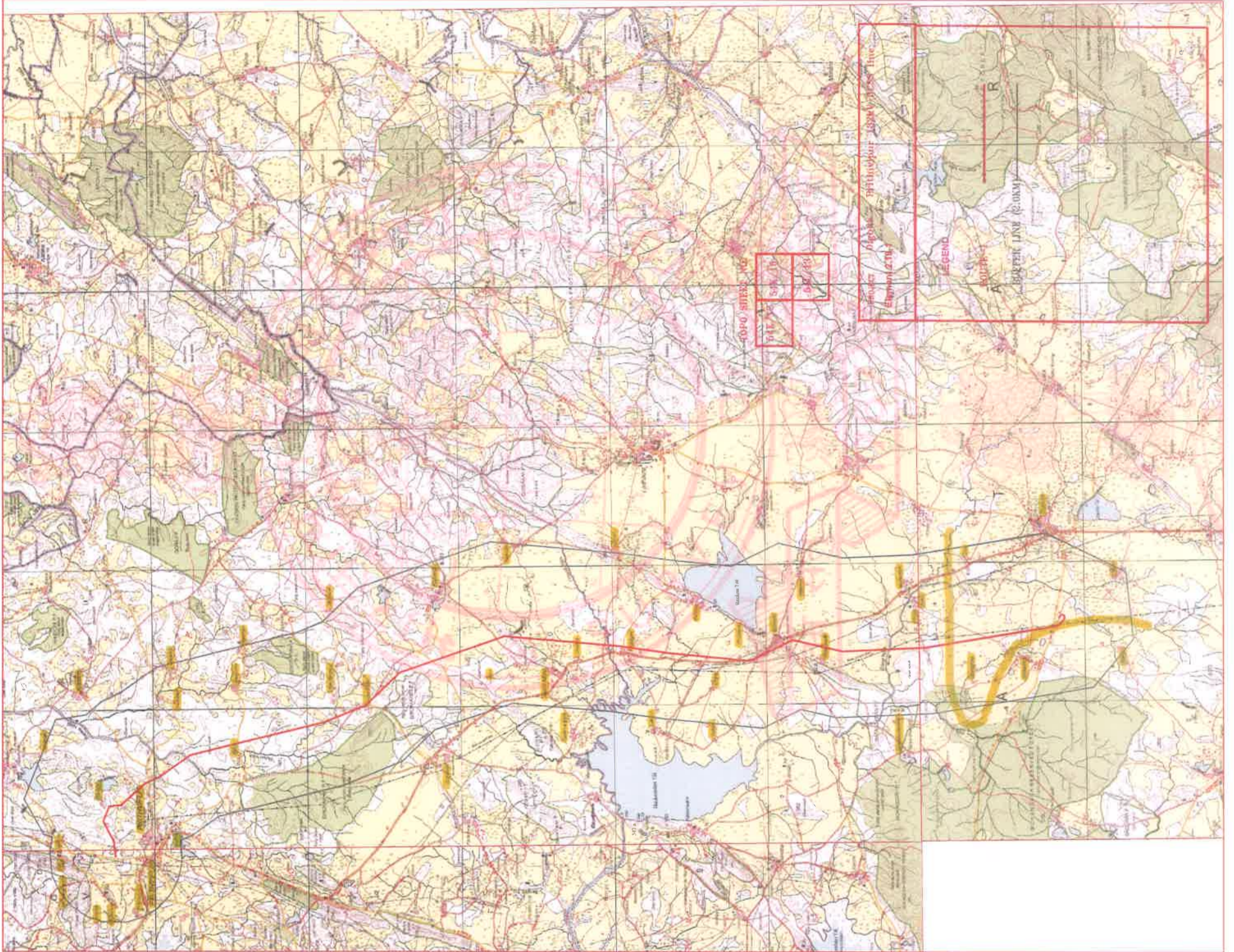


MAP NO. 27  
 P.No. 59/2021  
 TL/3 dt. 17.05.2022  
 S.No. 18(ii)



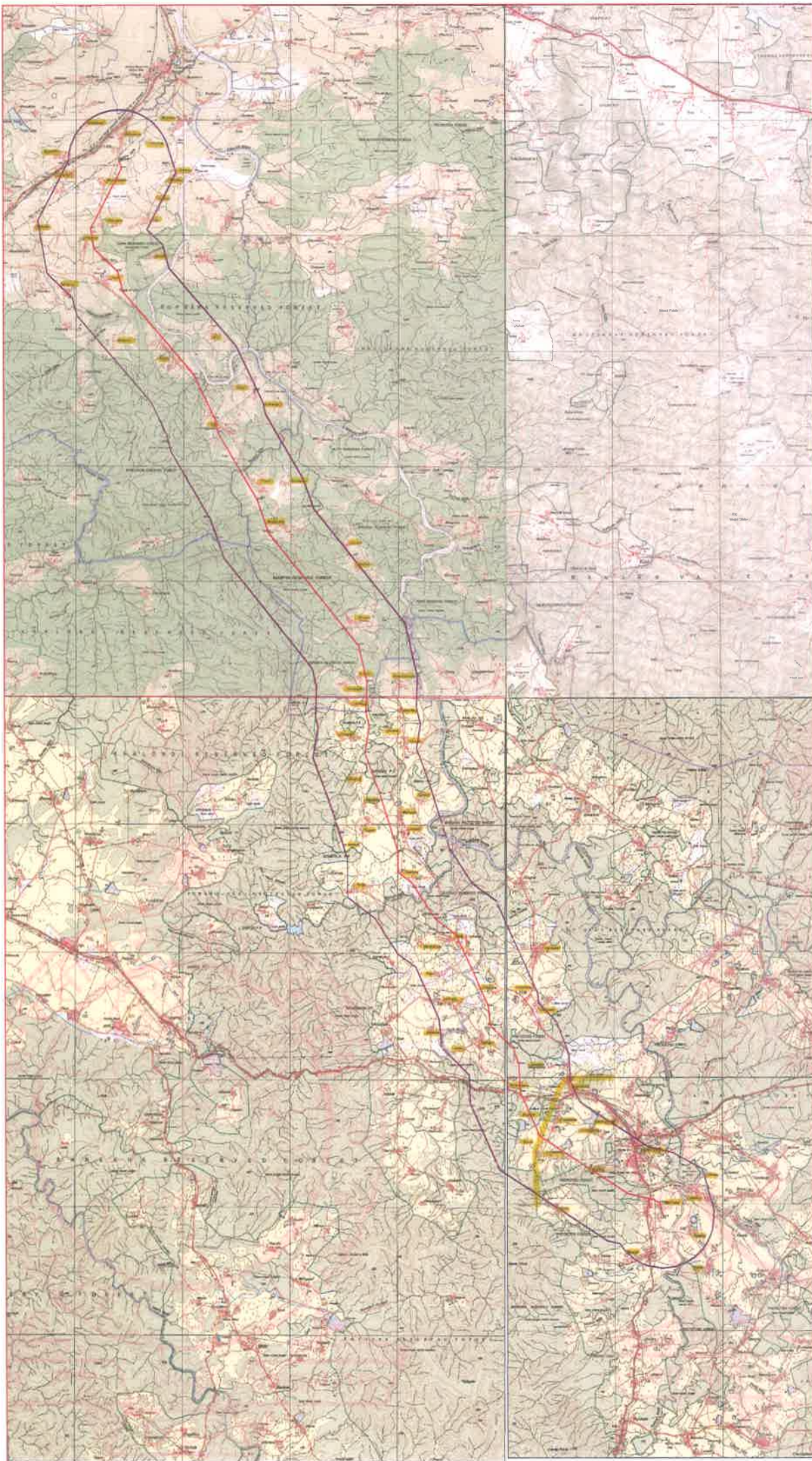
M.P. ELECTRICITY REGULATORY COMMISSION  
 BHO PAL  
 26/05/2022

19(i)



MAP NO. 28  
 P.No. 59/2021  
 TL/3 Dt. 17.05.2022  
 S.No. 19(i)





PRODUCED BY AN AUTODESK EDUCATIONAL PRODUCT

PRODUCED BY AN AUTODESK EDUCATIONAL PRODUCT



TOPO SHEET NO.

6407	
6408	88815

Project: L1LO of Nainpur - Mandla 332kV line at  
 Bahar 132kV S/S  
 Element: 2.16.2

19/11

LEGEND

ROUTE-1

BUFFER LINE (2.0KM)

MAP No. 29  
 P.No. 59/2021  
 RL/3 dt. 13.05.2022  
 S.No. 19(ii)



POWER TRANSMISSION PACKAGE  
 26/05/2022